

Appendix D
Cultural Resources and Tribal Cultural Resources Identification Study

**CULTURAL RESOURCES AND TRIBAL
CULTURAL RESOURCES IDENTIFICATION
STUDY FOR THE IRVINE CAMPUS
MEDICAL COMPLEX PROJECT
UNIVERSITY OF CALIFORNIA, IRVINE,
ORANGE COUNTY,
CALIFORNIA**

Prepared for:

UNIVERSITY OF CALIFORNIA, IRVINE
ENVIRONMENTAL PLANNING & SUSTAINABILITY
4199 CAMPUS DRIVE, SUITE 380
IRVINE, CA 92697

Prepared by:

MARGO NAYYAR, MA

Michael Baker

INTERNATIONAL

2729 PROSPECT PARK DRIVE, SUITE 220
RANCHO CORDOVA, CA 95670

WITH CONTRIBUTIONS FROM:

cogstone
PALEONTOLOGY - ARCHAEOLOGY - HISTORY

AUGUST 2020

TABLE OF CONTENTS

1.0 Executive Summary 1

 1.1 Project Background..... 1

 1.2 Scope and Methodology 1

 1.3 Results 1

2.0 Regulatory Setting 2

 2.1 California Environmental Quality Act 2

 2.2 UCI Long Range Development Plan 5

3.0 Background 9

 3.1 Environmental Setting..... 9

 3.2 Geological Setting 9

 3.3 Prehistoric Background 10

 3.4 Ethnography 11

 3.5 History 11

4.0 Identification Methods and Results 14

 4.1 Records Search 14

 4.2 Literature Review 17

 4.3 Interested Parties Consultation 17

 4.4 Archaeological Field Survey Results 22

 4.5 Geoarchaeological Sensitivity Results..... 22

 4.6 Built Environment Survey 23

 4.7 California Register Evaluations 23

5.0 Summary and Recommendations 26

 5.1 Built Environment Resources 26

 5.2 Archaeological Resources 26

 5.2.1 Mitigation Measures 27

6.0 Professional Qualifications 28

7.0 References Cited 17

Appendix A – Figures (partially redacted)

Appendix B – Tribal Consultation Log

Appendix C – Historical Society Consultation

Appendix D – DPR 523 Forms (redacted)

1.0 EXECUTIVE SUMMARY

1.1 PROJECT BACKGROUND

The University of California, Irvine (UCI) proposes the Irvine Campus Medical Complex Project (project). The project proposes demolition of the current buildings on the approximately 15-acre site and construction of an ambulatory care center, specialty hospital, ambulatory clinics, and parking structure. UCI is the lead agency for the California Environmental Quality Act (CEQA).

1.2 SCOPE AND METHODOLOGY

This report documents the methods and results of the cultural resources study conducted for the project. Michael Baker International conducted archival research, records search, Native American Sacred Lands File search, historical society consultation, and California Register of Historical Resources evaluation of two built environment resources, and authored this report in support of environmental review of the project under CEQA, as well as in compliance with the 2007 UCI Long Range Development Plan (LRPD) Environment Impact Report (EIR) mitigation measures Cul-1A, Cul-1B, Cul-2A, and Cul-2B. Cogstone Resource Management, Inc. (Cogstone) conducted the cultural resources field survey and geoarchaeological sensitivity analysis for the project. Cogstone's findings were incorporated into this report.

1.3 RESULTS

Two built environment resources were evaluated and recommended ineligible for inclusion in the California Register.

Resource Name and Number	Eligibility to the California Register	Historical Resource for the Purposes of CEQA
UCI North Campus	Not eligible	No
UCI Arboretum	Not eligible	No

One archaeological resource was identified within the project area. See below for a summary of the resource.

Resource Name and Number	Eligibility to the California Register	Project Activities	Recommendations
P-30-000115/ CA-ORA-000115	Recommended potentially eligible	Destruction for hospital and parking lot	Data recovery

2.0 REGULATORY SETTING**2.1 CALIFORNIA ENVIRONMENTAL QUALITY ACT**

CEQA applies to all discretionary projects undertaken or subject to approval by the state's public agencies (California Code of Regulations [CCR] Title 14(3) Section 15002(i)). CEQA states that it is the policy of the state of California to "take all action necessary to provide the people of this state with historic environmental qualities and preserve for future generations examples of the major periods of California history" (Public Resources Code [PRC] Section 21001(b), (c)). Under the provisions of CEQA, "a project with an effect that may cause a substantial adverse change in the significance of a historical resource is a project that may have a significant effect on the environment" (CCR Title 14(3) Section 15064.5(b)).

CEQA Guidelines Section 15064.5(a) defines a "historical resource" as a resource which meets one or more of the following criteria:

- Listed in, or eligible for listing in, the California Register.
- Listed in a local register of historical resources (as defined at PRC Section 5020.1(k)).
- Identified as significant in a historical resource survey meeting the requirements of PRC Section 5024.1(g).
- Determined to be a historical resource by a project's lead agency (CCR Title 14(3) Section 15064.5(a)).

A historical resource consists of "any object, building, structure, site, area, place, record, or manuscript which a lead agency determines to be historically significant or significant in the architectural, engineering, scientific, economic, agricultural, educational, social, political, military, or cultural annals of California. Generally, a resource shall be considered by the lead agency to be 'historically significant' if the resource meets the criteria for listing in the California Register of Historical Resources" (CCR Title 14(3) Section 15064.5(a)(3)).

CEQA requires that historical resources and unique archaeological resources be taken into consideration during the CEQA planning process (CCR Title 14(3) Section 15064.5; PRC Section 21083.2). If feasible, adverse effects to the significance of historical resources must be avoided or mitigated (CCR Title 14(3) Section 15064.5(b)(4)). The significance of a historical resource is impaired when a project demolishes or materially alters in an adverse manner those physical characteristics of a historical resource that convey its historical significance and that justify its eligibility for the California Register. If there is a substantial adverse change in the significance of a historical resource, the preparation of an environmental impact report may be required (CCR Title 14(3) Section 15065(a)).

If the cultural resource in question is an archaeological site, CEQA (CCR Title 14(3) Section 15064.5(c)(1)) requires that the lead agency first determine if the site is a historical resource as defined in CCR Title 14(3) Section 15064.5(a). If the site qualifies as a historical resource, potential adverse impacts must be considered in the same manner as a historical resource (OHP 2001a). If the archaeological site does not qualify as a historical resource but does qualify as a unique archaeological site, then the archaeological site is treated in accordance with PRC Section 21083.2 (CCR Title 14(3) Section 15069.5(c)(3)). In practice, most archaeological sites that meet the definition of a unique archaeological resource will also meet the definition of a historical resource. CEQA defines a "unique archaeological resource" as an archaeological artifact,

object, or site about which it can be clearly demonstrated that, without merely adding to the current body of knowledge, there is a high probability that it meets one or more of the following criteria:

- Contains information needed to answer important scientific research questions and that there is a demonstrable public interest in that information.
- Has a special and particular quality such as being the oldest of its type or the best available example of its type.
- Is directly associated with a scientifically recognized important prehistoric or historic event or person (PRC Section 21083.2(g)).

If an impact to a historical or archaeological resource is significant, CEQA requires feasible mitigation measures to minimize the impact (CCR Title 14(3) Section 15126.4 (a)(1)). Mitigation must lessen or eliminate the physical impact that the project will have on the resource. Generally, the use of drawings, photographs, and/or displays does not mitigate the physical impact on the environment caused by demolition or destruction of a historical resource. However, CEQA (PRC Section 21002.1(b)) requires that all feasible mitigation be undertaken even if it does not mitigate impacts to a less than significant level (OHP 2001a:9).

2.1.1 California Register of Historical Resources

The California Register is a guide to cultural resources that must be considered when a government agency undertakes a discretionary action subject to CEQA. The California Register helps government agencies identify and evaluate California's historical resources (OHP 2001b:1) and indicates which properties are to be protected, to the extent prudent and feasible, from substantial adverse change (PRC Section 5024.1(a)). Any resource listed in, or eligible for listing in, the California Register is to be considered during the CEQA process (OHP 2001a:7).

A cultural resource is evaluated under four California Register criteria to determine its historical significance. A resource must be significant in accordance with one or more of the following criteria:

- 1) Is associated with events that have made a significant contribution to the broad pattern of California's history and cultural heritage.
- 2) Is associated with the lives of persons important in our past.
- 3) Embodies the distinctive characteristics of a type, period, region, or method of construction, or represents the work of an important creative individual, or possesses high artistic values.
- 4) Has yielded, or may be likely to yield, information important in prehistory or history.

Age

In addition to meeting one or more of the above criteria, the California Register requires that sufficient time must have passed to allow a "scholarly perspective on the events or individuals associated with the resource." Fifty years is used as a general estimate of the time needed to understand the historical importance of a resource (OHP 2006:3). The California Office of Historic Preservation (OHP) recommends documenting, and taking into consideration in the planning process, any cultural resource that is 45 years or older (OHP 1995:2).

Period of Significance

The period of significance for a property is “the length of time when a property was associated with important events, activities, persons, or attained the characteristics which qualify it for National Register listing” (NPS 1997b:42). The period of significance begins with the date of the earliest important land use or activity that is reflected by historic characteristics tangible today. The period closes with the date when events having historical importance ended. The period of significance for an archaeological property is “the broad span of time about which the site or district is likely to provide information” (NPS 1997b:42). Archaeological properties may have more than one period of significance.

Historic Context

The significance of cultural resources is generally evaluated using a historic context that groups information about related historical resources based on theme, geographic limits, and chronological period (OHP 1995:11).

Integrity

The California Register also requires a resource to possess integrity, which is defined as “the authenticity of a historical resource’s physical identity evidenced by the survival of characteristics that existed during the resource’s period of significance. Integrity is evaluated with regard to the retention of location, design, setting, materials, workmanship, feeling, and association” (OHP 2006:2).

Archaeologists use the term “integrity” to describe the level of preservation or quality of information contained within a district, site, or excavated assemblage. Integrity is relative to the specific significance which the resource conveys. Although it is possible to correlate the seven aspects of integrity with standard archaeological site characteristics, those aspects are often unclear for evaluating the ability of an archaeological resource to convey significance under Criterion 4. The integrity of archaeological resources is judged according to the site’s ability to yield scientific and cultural information that can be used to address important research questions (National Park Service 1997a:44–49).

Eligibility

Resources that are significant, meet the age guidelines, and possess integrity are considered eligible for listing in the California Register.

2.1.2 California Public Resources Code Section 5097.5

PRC Section 5097.5 prohibits excavation or removal of any “vertebrate paleontological site or any other archaeological, paleontological or historical feature, situated on public lands, except with express permission of the public agency having jurisdiction over such lands.” Public lands are defined to include lands owned by or under the jurisdiction of the state or any city, county, district, authority, or public corporation, or any agency thereof. Section 5097.5 states that any unauthorized disturbance or removal of archaeological, historical, or paleontological materials or sites located on public lands is a misdemeanor.

2.1.3 California Health and Safety Code Section 7050.5

California Health and Safety Code Section 7050.5 states that in the event of discovery or recognition of any human remains in any location other than a dedicated cemetery, there shall be no further excavation or disturbance of the site or any nearby area reasonably suspected to overlie adjacent remains until the coroner of the county in which the remains are discovered has determined whether or not the remains are subject to the coroner's authority. If the human remains are of Native American origin, the coroner must notify the Native American Heritage Commission within 24 hours of this identification. The commission will identify a Native American most likely descendant to inspect the site and provide recommendations for the proper treatment of the remains and associated grave goods.

2.1.4 Assembly Bill 52

Assembly Bill (AB) 52 of 2014 amended PRC Section 5097.94 and added PRC Sections 21073, 21074, 21080.3.1, 21080.3.2, 21082.3, 21083.09, 21084.2, and 21084.3. AB 52 established that tribal cultural resources must be considered under CEQA and also provided for additional Native American consultation requirements for the lead agency. PRC Section 21074 describes a tribal cultural resource as a site, feature, place, cultural landscape, sacred place, or object that is considered of cultural value to a California Native American Tribe. A tribal cultural resource is either:

- On the California Register or a local historic register;
- Eligible for the California Register or a local historic register; or
- A resource determined by the lead agency, in its discretion and supported by substantial evidence, to be significant pursuant to criteria set forth in subdivision (c) of PRC Section 5024.1.

AB 52 formalizes the lead agency–tribal consultation process, requiring the lead agency to initiate consultation with California Native American groups that are traditionally and culturally affiliated with the project area, including tribes that may not be federally recognized. Lead agencies are required to begin consultation prior to the release of a negative declaration, mitigated negative declaration, or environmental impact report.

Section 1 (a)(9) of AB 52 establishes that “a substantial adverse change to a tribal cultural resource has a significant effect on the environment.” Effects on tribal cultural resources should be considered under CEQA. Section 6 of AB 52 adds Section 21080.3.2 to the PRC, which states that parties may propose mitigation measures “capable of avoiding or substantially lessening potential significant impacts to a tribal cultural resource or alternatives that would avoid significant impacts to a tribal cultural resource.” Further, if a California Native American tribe requests consultation regarding project alternatives, mitigation measures, or significant effects to tribal cultural resources, the consultation shall include those topics (PRC Section 21080.3.2[a]). The environmental document and the mitigation monitoring and reporting program (where applicable) shall include any mitigation measures that are adopted (PRC Section 21082.3[a]).

2.2 UCI LONG RANGE DEVELOPMENT PLAN

The 2007 LRDP identifies general types of campus development and land uses to support projected expansion of existing academic programs and to enable new academic program initiatives at UCI through the plan horizon year of 2025-26. In addition, it provides a foundation for post-2025 development at UCI. The 2007 LRDP is accompanied by an Environmental Impact Report (EIR) that identifies potential environmental effects of the plan and prescribes mitigation measures for reducing significant environmental impacts from campus physical development.

The EIR provides three mitigation measures concerning archaeological resources:

Cul-1A During preparation of the Initial Study for future projects that implement the 2007 LRDP and are located on sites containing recorded archaeological resources, UCI shall retain a qualified archaeologist to define and survey the area of potential effects (APE) on the project site. The APE shall be based on the extent of ground disturbance and site modification anticipated for the project including an appropriate buffer where specific project boundaries have yet to be established.

During the course of project planning, any recorded archaeological sites within the project APE shall be avoided to the extent feasible. If such sites cannot be avoided through project modifications or redesign, then the archeologist shall evaluate all archaeological resources observed within the project APE for significance in accordance with CEQA Guidelines Section 15064.5(c). This evaluation shall also determine the extent of the archaeological resource, if not already established. If an archaeological resource within the project APE is determined to be significant, then mitigation measure Cul-1B shall be implemented.

Cul-1B Prior to land clearing, grading, or similar land development activities for future projects that implement the 2007 LRDP and would impact a significant archaeological resource as determined by mitigation measure Cul-1A, a qualified archaeologist shall prepare and implement a data recovery plan. The plan shall include, but not be limited to, the following measures:

- i. Perform appropriate technical analyses;
- ii. File any resulting reports with the South Coastal Information Center; and
- iii. Provide the recovered materials to an appropriate repository for curation.

Cul-1C Prior to land clearing, grading, or similar land development activities for future projects that implement the 2007 LRDP in areas of identified archaeological sensitivity, UCI shall retain a qualified archaeologist (and, if necessary, a culturally-affiliated Native American) to monitor these activities. In the event of an unexpected archeological discovery during grading, the onsite construction supervisor shall be notified and shall redirect work away from the location of the archaeological find. A qualified archaeologist shall oversee the evaluation and recovery of archaeological resources, in accordance with the procedures below, after which the on-site construction supervisor shall be notified and shall direct work to continue in the location of the archaeological find. A record of monitoring activity shall be submitted to UCI each month and at the end of monitoring. If the archaeological discovery is determined to be significant, the archaeologist shall prepare and implement a data recovery plan. The plan shall include, but not be limited to, the following measures:

- i. Perform appropriate technical analyses;
- ii. File any resulting reports with the South Coastal Information Center; and
- iii. Provide the recovered materials to an appropriate repository for curation, in consultation with a culturally-affiliated Native American.

Mitigation measures Cul-2A through Cul-2D below provide a progressive mitigation program for avoiding and/or mitigating impacts to historical resources.

- Cul-2A During preparation of the Initial Study for future projects that implement the 2007 LRDP, are located on sites containing facilities that are 50 years of age or older, and are potential historic resources, a qualified professional shall define and survey the Area of Potential Effect (APE) on the project site. The APE shall be based on the extent of ground disturbance and site modification anticipated for the project. If historic resources are present within the project APE, then mitigation measure Cul-2B shall be implemented.
- Cul-2B Before altering or otherwise affecting historic resources within the project APE as determined by mitigation measure Cul-2A, they shall be evaluated for significance by the architectural historian in accordance with CEQA Guidelines Section 15064.5. The evaluation process shall include the development of appropriate historical background research as context for the assessment of the significance of the historic resources in the history of the UC system, UCI, and the region. The historic resources shall be recorded on a California Department of Parks and Recreation DPR 523 form or equivalent documentation. If the historic resources are determined to be significant, then mitigation measure Cul-2C shall be implemented.
- Cul-2C For historic resources determined to be significant as determined by mitigation measure Cul-2B, UCI shall consider measures that would enable the project to avoid direct or indirect impacts to the significant historic resources. For significant historic resources in which avoidance or reuse on-site is not feasible, mitigation measure Cul-2D shall be implemented.
- Cul-2D For significant historic resources in which avoidance or reuse on-site is not feasible as determined by mitigation measure Cul-2C, one of the following options shall be implemented: i. Remodeling, renovation, or other alterations to significant historic resources within the project APE shall be conducted in compliance with the "Secretary of the Interior's Standards for the Treatment of Historic Properties with Guidelines for Preserving, Rehabilitating, Restoring, and Reconstructing Historic Buildings." ii. Prior to relocation or demolition of significant historic resources within the project APE, a qualified professional shall document the resources, including any buildings, associated landscaping and setting. Documentation shall include still and video photographs (to be provided on a CD-ROM) and a written record in accordance with the standards of the Historic American Building Survey or Historic American Engineering Record, including accurate scaled mapping, architectural descriptions, and scaled architectural plans, if available. The record shall be accompanied by a report containing site-specific history and appropriate contextual information. This information shall be gathered through site-specific and comparative archival research and oral history collection as appropriate. A copy of the record shall be deposited with the UCI archives. As appropriate, include features in the design of the new project that reuse or represent features or the historic building or provide interpretative information on the historic resource.

The majority of the campus, including the project area, is rated as High Sensitivity for paleontological resources and the remainder of the campus is rated as Low to Moderate Sensitivity. Therefore, mitigation measures Cul-4A and Cul-4B apply to any project on the UCI campus involving the excavation of sedimentary rock material other than topsoil. Implementation

of mitigation measures Cul-4A to Cul-4B would reduce potential significant impacts to paleontological resources to a level that is less than significant.

- Cul-4A Prior to grading or excavation for future projects that implement the 2007 LRDP and would excavate sedimentary rock material other than topsoil, UCI shall retain a qualified paleontologist to monitor these activities. In the event fossils are discovered during grading, the on-site construction supervisor shall be notified and shall redirect work away from the location of the discovery. The recommendations of the paleontologist shall be implemented with respect to the evaluation and recovery of fossils, in accordance with mitigation measures Cul-4B and Cul-4C, after which the on-site construction supervisor shall be notified and shall direct work to continue in the location of the fossil discovery. A record of monitoring activity shall be submitted to UCI each month and at the end of monitoring.
- Cul-4B If the fossils are determined to be significant, then mitigation measure Cul-4C shall be implemented.
- Cul-4C For significant fossils as determined by mitigation measure Cul-4B, the paleontologist shall prepare and implement a data recovery plan. The plan shall include, but not be limited to, the following measures: i. The paleontologist shall ensure that all significant fossils collected are cleaned, identified, catalogued, and permanently curated with an appropriate institution with a research interest in the materials (which may include UCI); ii. The paleontologist shall ensure that specialty studies are completed, as appropriate, for any significant fossil collected; and iii. The paleontologist shall ensure that curation of fossils are completed in consultation with UCI. A letter of acceptance from the curation institution shall be submitted to UCI.

3.0 BACKGROUND

3.1 ENVIRONMENTAL SETTING

The project area is located near the intersection of Jamboree Road and Birch Street, just to the west of the San Joaquin Marsh Reserve about halfway between Costa Mesa and Irvine, in Orange County, California. The project area sits at approximately 16 meters (52.5 feet) above mean sea level and consists of paved parking areas, manicured lawns, graded recreation areas, and single-story, semi-permanent structures. The San Joaquin Marsh Reserve drains into San Diego Creek, which feeds Newport Bay, and ultimately the Pacific Ocean. Geologic deposits at the surface of the project area include Palos Verdes sand that was laid down during the Pleistocene (Brock, Roeder, and Elliott 1985), and the USDA (2019) informs that the project area lies in well-drained clay soils consisting of Alo clay, 9 to 15 percent slopes. Brock, Roeder, and Elliot (1985) describe the area as being "optimal ... for prehistoric inhabitation by both animals and people," and that "evidence ... clearly shows that the available resources were being heavily exploited in prehistory."

3.2 GEOLOGICAL SETTING

The project area lies in the Tustin Plain, a broad coastal plain of Orange County, California. The Tustin Plain is bounded by the Santa Ana Mountains to the east, the Puente and Coyote Hills to the north, the Pacific Ocean to the west, and the San Joaquin Hills to the south. Orange County is part of the coastal section of the Peninsular Range Geomorphic Province, which is characterized by elongated northwest-trending mountain ridges separated by sediment-floored valleys. Faults branching off from the San Andreas Fault to the east create the local mountains and hills. The Peninsular Ranges Geomorphic Province is located in the southwestern corner of California and is bounded by the Transverse Ranges Geomorphic Province to the north and the Colorado Desert Geomorphic Province to the east.

3.2.1 Stratigraphy

The project area is mapped as late to middle Pleistocene old paralic deposits overlain by alluvial fans. A gully is present immediately to the northwest of Jamboree Road. San Diego Creek, now San Diego Canal, parallels Jamboree Road less than 0.1 mile to the southeast of the project area. There, late Pleistocene to Holocene young alluvium was deposited by San Diego Creek. Most of the project area rests on the same terrace that Jamboree Road is situated on, about 40 feet above the elevation of San Diego Creek. A gully feeding into San Diego Creek is present at the northeastern end of the project area. As the project area sits on a high point between the two gullies, no sediments from high elevations would have passed through the project area.

Old Paralic Deposits Overlain by Alluvial Fans, Middle to Late Pleistocene (Qopf)

The project area is mapped entirely as middle to late Pleistocene (774,000 to 121,000 years old) near-shore marine to nonmarine deposits, which are capped by late Pleistocene alluvial fan deposits. These interfingering strandline, beach, estuarine, and colluvial deposits are located on uplifted, wave cut abrasion platforms and are composed of poorly sorted, moderately permeable, reddish-brown sands. The project area is mapped as a sandier subunit (Qopfa; Morton and Miller 2006).

Young Alluvium, Holocene To Late Pleistocene (Oya)

Potentially also within the project area are late Pleistocene to Holocene (121,000 years old to historic) sediments. These sediments consist of poorly consolidated, poorly sorted, permeable clays to sands. The material was deposited by streams and rivers on the flat flood plains of the area typically during flooding events (Morton and Miller 2006).

3.2.2 Buried Site Potential Classifications

Very low: Soils are underlain by deposits that predate human occupation of the region. Soils that include B horizons, especially if they are argillic or silicic (duripan) horizons, are also classified as very low. Additionally, exposed bedrock, borrow pits, heavily eroded or gullied land, or water bodies have a very low potential. Areas of high erosion, water, borrow pits, rock outcrops, or sediments mapped as Pleistocene or older are classified as having a very low potential.

Low: Soils are underlain by deposits that predate human occupation of the region. High-energy deposits are unlikely to contain cultural materials in a primary context, are residual soils (soils weathered in place above bedrock), or include B horizons. Low-potential areas include Inceptisols. These are formed in residual soils weathered directly from bedrock and, thus, have a low potential for buried sites. Areas where soils are weathered from bedrock, dissected alluvial fans, and locations where soils are forming on mountains are classified as having a low potential.

Medium: Soils are underlain by deposits that are most likely terminal Pleistocene or Holocene in age, possibly have intact buried surfaces, or have sediments that are likely to have been deposited in a low-energy environment. Alluvial fans, fan aprons, valley fills, dissected remnants of alluvial fans, floodplains, and drainages are classified as having a medium potential.

High: Soils are underlain by deposits that are most likely terminal Pleistocene or Holocene in age, or sediments represent low-energy deposits, or have a high potential to contain buried intact geomorphic surfaces that could have been used by humans in the past. Alluvial stream terraces and floodplains, terrace escarpments, alluvial fans (fan skirts, fan aprons, and inset fans), and areas with aeolian deposits are classified as having a high potential.

3.3 PREHISTORIC BACKGROUND

The prehistoric sequence in the Irvine area is generally defined by four distinct phases. This sequence was initially developed by Wallace (1955), and consists of the Early Man (6500–5500 BC), Millingstone (5500–3000 BC), Intermediate (3000 BC–AD 500), and Late (AD 500–AD Historic) horizons.

The Early Man horizon began with the first entry of people into California. These people probably subsisted mainly on big game and minimally processed plant foods, and had no trade networks. Current research, however, indicates more sedentism, plant processing, and trading than previously believed. The Millingstone horizon is characterized by the introduction of manos and metates (grinding stones), indicating an increased reliance on hard-shell plant seeds for subsistence. This period also sees shellfish becoming an increasingly relied-upon piece of the diet, increased use of plant foods, elaboration of burial and grave goods, and increasingly complex trade networks. The Intermediate horizon is marked by reliance on larger foodstuffs, with acorns making a particularly important contribution, as evidenced by the appearance of stone mortars and pestles. The Late horizon consisted of extensive trade networks and complex social structures and institutions, increased use of deep sea fish and marine mammals for subsistence, clothing,

and cultural items (jewelry, trade goods, etc.), and the widespread adoption of the bow and arrow (Brock, Roeder, and Elliot 1985).

3.4 ETHNOGRAPHY

Getchell and Atwood (2007) argue that there is ethnographic evidence that the project area lies in territory utilized by both Gabrielino and Juaneño peoples. Both the Gabrielino and Juaneño fall into the Takic linguistic family.

The Gabrielino engaged in seasonal harvesting, fishing, fowling, and hunting, and were organized in kin groups based around permanent coastal sites, and within canyons and valleys. Complex, kinship-based socioeconomic and political networks tied coastal groups to their inland counterparts (Getchell and Atwood 2007). Bean and Smith (1978) conclude that “with the possible exception of the Chumash, the Gabrielino were the wealthiest, most populous, and most powerful ethnic nationality in aboriginal southern California.”

The Takic-speaking ancestors of the Gabrielino began displacing the indigenous Hokan-speaking groups around 500 BC, and by the time of European contact, the Gabrielino population is estimated to have exceeded 5,000 (Bean and Smith 1978).

The other group ethnographically tied to the project area and vicinity, the Juaneño (also referred to as the Luiseño), employed a “more rigid social structure,” and maintained a “greater population density” than their Gabrielino neighbors (Bean and Shipek 1978). The Juaneño subsisted on small game and marine foraging and relied heavily on acorns and other seeds. Bean and Shipek (1978) report that their social structure centered on sedentary, autonomous villages with areas specifically set aside for hunting, foraging, and fishing.

3.5 HISTORY

3.5.1 UC Irvine

Clark Kerr became University of California (UC) president in 1957 and prioritized expanding the UC system to accommodate more students, and successfully opened three new campuses over the course of his career (UCI 2019a).

The Irvine Company, owners of the 93,000-acre Irvine Ranch, began planning real estate development in the ranch at the same time the UC Regents began searching for a new campus location. Kerr liked the Irvine site because he believed dealing with a single landowner would simplify the complex job of designing and building a large campus. In 1960, the Irvine Company sold 1,000 acres for a new UC campus, which would then anchor a master-planned suburban community. Both the campus and planned community were ultimately designed by William Pereira, a former Hollywood art director-turned-architect. (UCI 2019a; Masters 2015).

The Irvine Company sold the acreage, called the San Joaquin foothills, to the UC for \$1 because a charter in the company policy stated that real property could not be donated to a public entity. (UCI 2019a)

Pereira's master plan for the campus preserved wetlands, infused modernist planning principles such as segregation of automotive and pedestrian traffic, and boldly experimented with form. Traditional features such as a central quad and brick-clad buildings were not developed for the campus. Instead, the main campus was designed with a central park area and pedestrian walkways, and encircled by five academic educational buildings associated with the humanities,

engineering, life sciences, physical sciences, and social sciences, as well as a library and administrative offices. (Masters 2015)

Campus construction began in 1961 and in 1965 the campus opened for its first graduating class. The campus's most distinctive feature is its circular layout with associated circulation roadways and landscaping.

3.5.2 North Campus

The campus has continued to grow since its initial construction and includes four areas known as the West Campus, South Campus, East Campus, and North Campus. The outer campus includes university housing, community support facilities, recreation and open space, and private industry. The outer campus layouts are more informal and veer from the stylized circulation of the main campus (UCI 2010: 24).

The project area, officially located in an area known as the North Campus, is removed from the main campus by approximately 1 mile. The North Campus contains approximately 144 acres, and currently accommodates mixed-use and campus support facilities, as well as a substantial amount of open space (UCI 2010: 38). However, according to a 2006 oral history interview with L.E. Cox, UC Irvine's first Vice Chancellor for Business Affairs, the area now known as North Campus was the original location of all administrative and faculty services between circa 1961-1965.

According to Cox, tensions between UC staff and the Irvine Company, which must have shared office space prior to construction of the main campus, prompted UC staff to develop the North Campus. Both growing entities needed office space. The main campus, at the time, had yet to be constructed and no utilities or roads were in place. However, along San Joaquin (now Jamboree), there were utility lines and a paved, two-lane road, and enough access and utilities to accommodate office buildings (Cox 2006: 3-5).

Butler Manufacturing Company designed a 10,000-square-foot building with office space at Cox's request. The design did not have any architectural appeal, so he provided the plan to Pereira, who assigned a young architect named Bob Lee to redesign the building. Butler Manufacturing Company built the building now known as Building #92. The building provided office space for three vice chancellors, the chancellor, a few faculty, and all administrative staff, as well as a conference room (Cox 2006: 6-7).

After construction of Building #92, Cox and other staff identified the need for a laboratory building with both wet and dry labs (Building #95), as well as a warehouse building (Building #91). The Butler company built both buildings as well (Cox 2006: 7).

L.E. Cox

Lavonne Edwin Cox was the first UCI employee and oversaw the construction of the UCI main campus between 1961–1965. He continued to manage campus construction projects until his retirement in 1978. He was a former army engineer responsible for managing the construction of 24 air bases for the Army Corps of Engineers. (UCI 2008).

Architect Bob Lee

Research failed to identify information regarding architect Bob Lee.

Butler Manufacturing Company

Butler Manufacturing Company is currently a leading supplier of nonresidential building systems, specialty components, and construction services. Its "Butler Buildings" are assembled on-site with metal parts made at Butler factories. These buildings have offered quick space solutions for industrial, military, and commercial uses. (Funding Universe 2019)

It was founded in 1901 in Kansas City, Kansas, and became known for its grain storage bins. Beginning in the 1950s, the company branched out to include prefabricated building construction and began eliminating fabrication of the grain storage bins to avoid dependency on the volatile agricultural markets. The company has manufactured and constructed Butler buildings all over the country (Funding Universe 2019).

Arboretum

Also located in the North Campus is the UCI Arboretum. It was constituted by the Academic Senate and approved by the chancellor in June 1967. It is first noted in the UCI 1968–1969 class catalogue:

Plans for this botanic garden facility envisage the treatment of the whole campus under scientific management. Records will be kept of the location of all material planted on the campus, and particular areas will be reserved for experimental and teaching work. A number of plant houses will be constructed; several are already in operation (UCI 1968: 24).

The arboretum is now a 12.5-acre botanical garden and research facility used by the School of Biological Sciences as a plant-growing facility for research and teaching purposes. The arboretum features plants and communities from the California Floristic Province and has an extensive collection of South African plants. (UCI 2019b)

Since the 1970s, the arboretum has shifted from its initial focus on South African plants and now includes a broad diversity of habitats representative of the California Floristic Province. These include exhibits of Baja California, California Channel Islands including those near Baja California, California native grasslands and wildflowers, maritime succulent scrub, Mojave Desert, southern maritime chaparral, Otay Mesa, and oak woodland. (UCI 2019b)

The arboretum does not appear to have been part of the original Long Range Development Plan for UCI (William L. Pereira & Associates 1963).

The UCI Arboretum was first developed beginning in 1967 and included only a few plant houses. By 1968 it was noted as still in the planning stages and landscaping did not take form until between 1972 and 1980. The landscaping was mostly realized by the 1990s, and expansion of the landscape began in the 2000s. Most of the designed landscaping was completed within the past 30 years.

4.0 IDENTIFICATION METHODS AND RESULTS

A records search, literature review, interested parties consultation, and an archaeological and built environment field survey were conducted to identify cultural resources and previous cultural resources studies within and adjacent to the project area.

4.1 RECORDS SEARCH

At the direction of Michael Baker International, South Central Coastal Information Center (SCCIC) staff conducted a records search (#20196.6182) of the project area on May 9, 2019. The records search was conducted with a half-mile search radius of the project area. The SCCIC, as part of the California Historical Resources Information System, California State University, Fullerton, an affiliate of the California Office of Historic Preservation (OHP), is the official state repository of cultural resource records and reports for Orange County. As part of the records search, the following federal and state of California inventories were reviewed:

- California Inventory of Historic Resources (OHP 1976).
- California Points of Historical Interest (OHP 1992 and updates).
- California Historical Landmarks (OHP 1996).
- Archaeological Determinations of Eligibility (OHP 2012a). The directory includes determinations for eligibility for archaeological resources in Orange County.
- Directory of Properties in the Historic Property Data (HPD) File (OHP 2012b). The directory includes the listings of the National Register, National Historic Landmarks, the California Register, California Historical Landmarks, and California Points of Historical Interest in Orange County.

4.1.1 Results

One previously recorded cultural resource has been identified within the project area, as described below.

P-30-000115 (CA-ORA-115) – This site consists of two loci, A and B. When first recorded by the University of California in April 1963, Locus A was recorded as a midden with sparse shell, and Locus B was described simply as a shell midden (King 1963a, 1963b). Pacific Coast Archaeological Society, Inc. (PCAS) reevaluated Locus B in 1966 and found groundstone and bowl fragments, and primarily water-derived faunal material (Van Hook 1966a). When resurveyed in August 1976, Howard Jones (1976a, 1976b) found four mano fragments, a metate fragment, three scrapers, utilized flakes, and fire-cracked rocks in Locus A, and the area was described as favorable for excavation. That same month, Jones found shell midden material in Locus B and described it as favorable for excavation as well. Construction of campus buildings later destroyed much of Locus A. J. Brock of the Archaeology Advisory Group reevaluated both loci in 1985 (1985a, 1985b), noting however that some material may remain in peripheral areas of Locus A. Brock described Locus B as in good condition with midden and limited chert lithic material, noting also that vegetation limited visibility.

Four cultural resources were identified within a half-mile radius of the project area and are briefly described below.

CULTURAL RESOURCES IDENTIFICATION METHODS AND RESULTS

Resource Name/#	Description	OHP Status Code	Distance from Project Area
P-30-000116/ CA-ORA-000116	Habitation site with dense shell midden and house-pits.	2S2 – Eligible for National Register	0.7 km
San Joaquin Gun Club P-30-000057/CA-ORA-000057	Semi-permanent village or central base habitation site with a large shell midden, pestle, manos, flaked stone tools and debitage, clam shell ornaments, shell beads, arrow shaft straighteners, incised stone, shell bracelet, projectile points, cores, hammerstones, cogstones, and bone awls. Also contains the remains of a late nineteenth to mid-twentieth century gun club.	N/A	0.06 km
P-30-100165	Isolate of faunal remain and a ceramic fragment.	N/A	0.8 km
Fluor Site (P-30-000121/CA-ORA-000121/H)	Potential village site previously evaluated as eligible for listing in the National Register and California Register under Criterion D/4.	3S, 3CS	0.2 km

Eleven previous cultural resources studies have been completed within the project area. These studies are summarized below.

Author	Date	Title	Within Project Area?	Resources identified in Project Area?
Getchell, Barbie, and John E. Atwood	2007	<i>Cultural Resources Inventory of the San Joaquin Freshwater Marsh Reserve Phase II Enhancement Plan Project Area in the City of Irvine, Orange County, California</i>	Yes	Yes
Desautels, Roger J.	1978	<i>Cultural Resources Report – Preliminary Assessment on the Proposed San Diego Creek Watershed Erosion and Sedimentary Control System in Hicks Canyon, Hicks Canyon Wash, Rattlesnake Creek Wash, San Diego Creek, and the San Joaquin Marsh Located in Orange County.</i> California Scientific Resource Surveys, Inc.	Yes	Yes

CULTURAL RESOURCES IDENTIFICATION METHODS AND RESULTS

Stickel, E. Gary, and Jerry B. Howard	1976	<i>Final Report of a Cultural Resource Survey of the University of California, Irvine</i>	Yes	Yes
Schroth, Adella	1979	<i>The History of Archaeological Research on Irvine Ranch Property: The Evolution of a Company Tradition</i>	Yes	Yes
Brock, James, Mark A. Roeder, and John F. Elliott	1985	<i>Archaeological, Paleontological, and Historical Resources Assessment Report for the U.C. Irvine North Campus Property</i>	Yes	Yes
Padon, Beth and Bill Breece	1985	<i>Archaeological Resource Inventory City of Irvine and its Sphere of Influence</i>	Yes	Yes
Bissell, Ronald M. and Rod Raschke	1988	<i>Cultural and Paleontological Resources Reconnaissance of the Long Range Development Plan Study Area, University of California, Irvine, Orange County, California</i>	Yes	Yes
Bissell, Ronald M.	1988	<i>Archaeological Resources Reconnaissance of the Long Range Development Plan Study Area, University of California, Irvine, Orange County, California</i>	Yes	Yes
Hurd, Gary S. and Michael E. Macko	1989	<i>Archaeological Test Results, Significance Evaluations, and Recommendations for Mitigation of Impacts at CA-ORA-115A, -115B, -116, & -121B University of California, Irvine North Campus</i>	Yes	Yes
Strozier, Hardy	1978	<i>The Irvine Company Planning Process and California Archaeology – A Review and Critique</i>	Yes	Yes
ARI	1976	<i>Annual Report to TIC from ARI</i>	Yes	Yes

4.2 LITERATURE REVIEW

Michael Baker International and Cogstone reviewed publications, maps, and websites for archaeological, ethnographic, historical, and environmental information about the project area and its vicinity and included findings in Section 3.0, Background, of this report. Reviewed literature includes:

- University of California, Davis, National Resources Conservation Service California Soils Resource Lab Soil Survey (UCD 2019)
- United States Department of Agriculture National Resources Conservation Service (USDA-NRCS 2019)
- Geology map of the San Bernardino and Santa Ana 30' x 60' quadrangles, California (Morton and Miller 2006)
- Township 6 South, Range 9 West, San Bernardino Base Line Meridian (BLM 1865)
- Manuscript Map of Rancho San Joaquin (Egan 1878)
- Map of Orange County, California (Finley 1889)
- Santa Ana, Calif. 1:250,000 scale topographic quadrangle (USGS 1896)
- Santa Ana, Calif. 1:250,000 scale topographic quadrangle (USGS 1901)
- Tustin, Calif. 1:31,680 scale topographic quadrangle (USGS 1932)
- Tustin, Calif. 7.5-minute topographic quadrangle (USGS 1948)
- Tustin, Calif. 7.5-minute topographic quadrangle (USGS 1965)
- Tustin, Calif. 7.5-minute topographic quadrangle (USGS 1974)
- Historicaerials.com (2019)

4.3 INTERESTED PARTIES CONSULTATION

4.3.1 Native American Consultation

Native American Heritage Commission (NAHC): On May 2, 2019, Michael Baker International sent the NAHC a letter with maps describing the project and asked the NAHC to review its Sacred Lands File for Native American cultural resources that may be affected by the project. Also requested were the names of Native Americans who might have information or concerns regarding the project area. Steven Quinn responded on May 17, 2019, informing Michael Baker International that the Sacred Lands File search provided positive results and to contact the Juaneño Band of Mission Indians, Acjachemen Nation for more information. Mr. Quinn also provided a list of Native American contacts (Appendix B).

Assembly Bill 52 and Senate Bill 18 Consultation

In compliance with PRC Section 21080.3.1(b), UCI provided formal notification to California Native American tribal representatives that have previously requested notification from UCI regarding projects within the geographic area traditionally and culturally affiliated with the tribe. Native American groups may have knowledge about cultural resources in the area and may have concerns about adverse effects from development on tribal cultural resources as defined in PRC Section 21074. Additionally, UCI contacted tribal representatives listed on the NAHC contact list

CULTURAL RESOURCES IDENTIFICATION METHODS AND RESULTS

pursuant to Senate Bill 18. Notification letters were sent via US Postal Service and/or email on May 26, 2020. Consultation is summarized below. See Appendix B for letter and email documentation.

Contact	Consultation Framework	Consultation Results
Jeff Grubbe, Chairperson Agua Caliente Band of Cahuilla Indians 5401 Dinah Shore Drive Palm Springs, CA 92264 Phone: (760) 699-6800	SB18	No response received to date.
Patricia Garcia-Plotkin, Director Agua Caliente Band of Cahuilla Indians 5401 Dinah Shore Drive Palm Springs, CA 92264 Phone: (760) 699-6907 ACBCI- THPO@aguacaliente.net	SB18	No response received to date.
Robert Dorame, Chairperson Gabrielino Tongva Indians of California Tribal Council P.O. Box 490 Bellflower, CA 90707 Phone: (562) 761 - 6417 Fax: (562) 761-6417 gtongva@gmail.com	SB18	No response received to date.
Charles Alvarez Gabrielino-Tongva Tribe 23454 Vanowen Street West Hills, CA 91307 Phone: (310) 403 - 6048 roadkingcharles@aol.com	SB18	No response received to date.
Sandonne Goad, Chairperson Gabrielino/Tongva Nation 106 1/2 Judge John Aiso St, #231 Los Angeles, CA 90012 Phone: (951) 807 - 0479 sgoad@gabrielino- tongva.com	SB18	No response received to date.
Anthony Morales, Chairperson Gabrieleno/Tongva San Gabriel Band of Mission Indians P.O. Box 693 San Gabriel, CA 91778 Phone: (626) 483 - 3564 GTtribalcouncil@aol.com	SB18	No response received to date.
Andrew Salas, Chairperson Gabrieleno Band of Mission Indians - Kizh Nation	AB52/ SB18	On June 16, 2020, the Tribe requested consultation under both AB52 and SB18. UCI

CULTURAL RESOURCES IDENTIFICATION METHODS AND RESULTS

Contact	Consultation Framework	Consultation Results
<p>P.O. Box 393 Covina, CA 91723 Phone: (626) 926 - 4131 admin@gabrielenoindians.org</p>		<p>responded the same day requesting a meeting which was scheduled for June 23, 2020.</p> <p>On July 22, 2020, UCI and the Tribe discussed the known archaeological site P-30-000115 (CA-ORA-115) located within the project area. UCI provided the Extended Phase I data recovery scope of work for the Tribe's review.</p> <p>UCI and the Tribe agreed to have a tribal monitor on-site during the data recovery and project-related earthmoving activities.</p>
<p>Sonia Johnston, Chairperson Juaneno Band of Mission Indians P.O. Box 25628 Santa Ana, CA 92799 sonia.johnston@sbcglobal.net</p>	SB18	No response received to date.
<p>Joyce Perry, Tribal Manager Juaneno Band of Mission Indians Acjachemen Nation 4955 Paseo Segovia Irvine, CA 92603 Phone: (949) 293-8522 kaalam@gmail.com</p>	AB52/ SB18	<p>Joyce Perry responded via email on June 4, 2020 for both consultation under AB52 and SB18. Ms. Perry requested the SLF search and SCCIC records search, indicated there are numerous culturally sensitive sites located within the UCI area, and provided a preliminary recommendation that Native and archaeological monitors are present during ground disturbing activities. Additionally, she requested a treatment plan for any inadvertent discoveries.</p> <p>UCI provided the requested information on June 8, 2020 and indicated monitoring would be accommodated in compliance with UCI's LRPD EIR mitigation measures Cul-1B and Cul-1C.</p> <p>On June 9, 2020, Ms. Perry requested that the Tribe provide the tribal monitoring and requested the mitigation measures for review.</p> <p>On June 30, 2020 UCI informed Ms Perry that an archaeological site was identified in the project area and requested a teleconference.</p> <p>On July 8, 2020, UCI and Ms. Perry discussed site P-30-000115 (CA-ORA-115). The archaeological site form and Extended Phase I data recovery proposal was provided for review, on July 22, 2020.</p>

CULTURAL RESOURCES IDENTIFICATION METHODS AND RESULTS

Contact	Consultation Framework	Consultation Results
		UCI and the Tribe agreed to have a tribal monitor on-site during the data recovery and project-related earthmoving activities.
Teresa Romero, Chairperson Juaneno Band of Mission Indians Acjachemen Nation 31411-A La Matanza Street San Juan Capistrano, CA 92675 Phone: (949) 488 - 3484 tromero@juaneno.com	AB52/ SB18	See above comment.
Matias Belardes, Chairperson Juaneno Band of Mission Indians Acjachemen Nation 32161 Avenida Los Amigos San Juan Capistrano, CA 92675 Phone: (949) 293 - 8522 kaamalam@gmail.com	AB52/ SB18	See above comment.
Scott Cozart, Chairperson Soboba Band of Luiseno Indians P. O. Box 487 San Jacinto, CA 92583 Phone: (951) 654-2765 jontiveros@soboba-nsn.gov	SB18	No response received to date.
Joseph Ontiveros, Cultural Resource Department Soboba Band of Luiseno Indians P. O. Box 487 San Jacinto, CA 92583 Phone: (951) 663-5279 jontiveros@soboba-nsn.gov	SB18	No response received to date.
Temet Aguilar, Chairperson Pauma Band of Luiseno Indians P.O. Box 369 Pauma Valley, CA 92061 Phone: (760) 742 - 1289 bennaecalac@aol.com	SB18	No response received to date.
Paul Macarro, Cultural Resources Coordinator Pechanga Band of Luiseno Indians P.O. Box 1477 Temecula, CA, 92593 Phone: (951) 770 - 6306 pmacarro@pechanga- nsn.gov	SB18	No response received to date.

CULTURAL RESOURCES IDENTIFICATION METHODS AND RESULTS

Contact	Consultation Framework	Consultation Results
Mark Macarro, Chairperson Pechanga Band of Luiseno Indians P.O. Box 1477 Temecula, CA 92593 Phone: (951) 770-6000 epreston@pechanga-nsn.gov	SB18	No response received to date.
Fred Nelson, Chairperson La Jolla Band of Luiseno Indians 22000 Highway 76 Pauma Valley, CA 92061 Phone: (760) 742 - 3771	SB18	No response received to date.
Shasta Gaughen, Tribal Historic Preservation Officer Pala Band of Mission Indians PMB 50, 35008 Pala Temecula Rd. Pala, CA 92059 Phone: (760) 891 - 3515 sgaughen@palatribe.com	SB18	No response received to date.
Bo Mazzetti, Chairperson Rincon Band of Luiseno Indians One Government Center Lane Valley Center, CA 92082 Phone: (760) 749-1051 bomazzetti@aol.com	SB18	On June 5, 2020, Deneen Pelton, Administrative Assistant, responded via email with attached letter stating that the project is not within the Band's specific Area of Historic Interest and have no additional information to provide.
Jim McPherson, Tribal Historic Preservation Officer Rincon Band of Luiseno Indians One Government Center Lane Valley Center, CA 92082 Phone: (760) 749-1051 vwhipple@rincontri.org	SB18	See above comment.
San Luis Rey, Tribal Council San Luis Rey Band of Mission Indians 1889 Sunset Drive Vista, CA 92081 Phone: (760) 724 - 8505 cjmojado@slrmissionindians.org	SB18	No response received to date.

4.3.2 Historical Society Consultation

On May 15, 2019, Michael Baker International sent an email to the Irvine Historical Society requesting any information or concerns regarding historical resources within the project area (Appendix C). No response was received.

4.4 ARCHAEOLOGICAL FIELD SURVEY RESULTS

Cogstone Archaeologist Edgar Alvarez surveyed the project area on May 29, 2019.

All undeveloped ground surface areas within the ground disturbance portion of the project area were examined for artifacts (e.g., flaked stone tools, tool-making debris, stone milling tools or fire-affected rock), soil discoloration that might indicate the presence of a cultural midden, soil depressions and features indicative of the former presence of structures or buildings (e.g., postholes, foundations), or historic-era debris (e.g., metal, glass, ceramics). Existing ground disturbances (e.g., cutbanks, ditches, animal burrows) were visually inspected.

Ground visibility varied within the project area from poor (10%) to fair (60%) due to hardscaping and building coverage as well as arboretum landscaping and vegetation such as grasses and weeds. The project area was relatively flat with a moderate slope in some areas. Sediments were not entirely visible due to hardscaping, building coverage, and vegetation. Approximately half of the project area is hardscaped or with building coverage while the other half is obscured by vegetation.

No cultural material was identified within P-30-000115 Locus A as it is almost completely built upon or otherwise disturbed by development, but Chione clam and cockle shells were observed within the boundaries of P-30-000115, Locus B, as well as outside of the site boundaries at the south end of the project area.

4.5 GEOARCHAEOLOGICAL SENSITIVITY RESULTS

University of California, Davis, National Resources Conservation Service California Soils Resource Lab (UCD 2019) soils maps were consulted along with the United States Department of Agriculture National Resources Conservation Service (USDA-NRCS 2019) soils descriptions, and geologic maps were utilized for this assessment. Soils of the project area were determined using the UCD maps. All sites were accessed in May 2019 for this assessment.

Subsurface site preservation depends on many factors. Soils and locations were analyzed for grain sizes, slope, and environmental indicators that contribute to the preservation of sites. Primarily sites accumulate where people have the highest probability of living, e.g., on lower slope gradients near water sources but in areas that are unlikely to experience regular flooding. Additionally, lower slope gradients decrease erosion and increase deposition, assisting in site burial. Both pebbly and coarser grain sizes as well as clay rich soils preserve artifacts poorly. The age of a soil also determines the likelihood of buried archaeological sites and must be assessed as the older soils are less likely to contain sites unless items were intentionally buried in them. Soils likely too old for site preservation have duripans (hardpans), and argillic (clay rich) horizons, while younger soils with a higher potential for preservation are indicated by the lack of a B horizon or the presence of a cambic horizon. Both Holocene alluvial and aeolian units have a higher potential for artifacts as the soils were co-deposited with the local cultural groups.

The project area is mapped as late to middle Pleistocene old paralic deposits overlain by alluvial fans. Although it is possible that the late Pleistocene to Holocene sediments of San Diego Creek

may interfinger with those of the project area, the differences in elevations make it unlikely that this happened except during the largest flooding events.

The presence of Alo clay with B horizon strata indicates a very low potential for buried which is further limited by the presence of the gully and associated 9 to 15 percent slopes. Despite this general assessment, two portions of two known sites, P-30-000115 and P-30-000121, are located within the project area.

4.6 BUILT ENVIRONMENT SURVEY

The built environment survey was completed on May 29, 2019, to identify and photograph extant buildings. Selected photographs are provided in the California Register evaluation of the UCI North Campus and UCI Arboretum. See Appendix D.

4.7 CALIFORNIA REGISTER EVALUATIONS

See below for brief California Register evaluations of the resources within the project area. The full evaluations can be reviewed in Appendix D.

UCI North Campus

Criterion 1 – The UCI North Campus was developed prior to the main UCI campus. It was developed essentially as ad hoc, temporary, office and laboratory space while the main campus was constructed. Since 1963-1965 when the North Campus consisted of 4 buildings, another approximately 17 buildings or structures and the arboretum have been added. The North Campus was not part of the original campus master plan. Therefore, the resource does not appear to be associated with the planned development of UCI and is not associated with a significant event or theme in local, state, or national history and, as such, does not appear eligible for listing in the California Register under Criterion 1.

Criterion 2 – **Research identified L.E. Cox, UC Irvine's first Vice Chancellor for Business Affairs**, as instrumental in the development of the North Campus. Cox is a significant person associated with the development of UC Irvine. For eligibility under Criterion 2, a resource must be the best representative example of the persons achievements. The North Campus, the ad hoc, temporary office and laboratory space is not the best representative example of Cox's achievements on the UCI campus. A better representative example may be the Main Campus. Therefore, the North Campus does not appear associated with persons significant in our past and does not appear eligible for listing in the California Register under Criterion 2.

Criterion 3 – The buildings associated with the North Campus include prefabricated Butler buildings with minor contemporary style detailing, and other various prefabricated buildings and structures lacking architectural distinction. The Butler buildings were commonly constructed throughout the country for at least a decade prior to the construction of the North Campus. The landscape features associated with the arboretum, as part of the North Campus, did not become recognizable as a botanical garden, a designed cultural landscape, until the 1990s. Furthermore, research failed to identify information regarding architect Bob Lee or any other associated architects, builders, or landscape designers. For these reasons, the UCI North Campus does not maintain the distinctive characteristics of a type, period, and method of construction, is not a work of a master, nor does it display high artistic value. Therefore, the resource does not appear eligible for listing in the California Register under Criterion 3.

Criterion 4 – The resource is not likely to yield valuable information that will contribute to our understanding of human history because the resource is not and never was the principal source of important information pertaining to subjects such as mid-20th century administrative or education buildings or landscapes. Therefore, the property does not appear eligible for listing under California Register under Criterion 4.

In conclusion, the UCI North Campus appears ineligible for listing in the California Register under Criteria 1, 2, 3, and 4 because it lacks association with a historic context. Additionally, the resource was evaluated in accordance with Section 15064.5(a)(2)–(3) of the CEQA Guidelines using the criteria outlined in Section 5024.1 of the California Public Resources Code, and it is not a historical resource for the purposes of CEQA.

UCI Arboretum

Criterion 1 – The UCI Arboretum was first developed beginning in 1967 and included only a few plant houses. By 1968 it was still in a planning stage. The landscaping did not take form until between 1972 and 1980, and did not become recognizable as a botanical garden until the 1990s. It does not appear to have been part of the original campus master plan, nor does research suggest a significant event took place at the UCI Arboretum. Therefore, the resource does not appear associated with a significant event or theme in local, state, or national history and, as such, does not appear eligible for listing in the California Register under Criterion 1.

Criterion 2 – Research failed to identify information regarding significant individuals associated with the resource. Therefore, the property does not appear to be associated with persons significant in our past and does not appear eligible for listing in the California Register under Criterion 2.

Criterion 3 – The buildings associated with the resource lack architectural styles. Further, the arboretum did not become recognizable as a botanical garden, or a designed cultural landscape, until the 1990s. The UCI Arboretum was first developed beginning in 1967 and included only a few plant houses. By 1968 it was noted as still in the planning stages and landscaping did not take form until between 1972 and 1980. The landscaping was mostly realized by the 1990s, and expansion of the landscape began in the 2000s. Most of the designed landscaping was completed within the past 30 years. Furthermore, research failed to identify information regarding an architect, builder, or landscape designer for the resource. For these reasons, none of the buildings on the property or the botanical garden embody the distinctive characteristics of a type, period, and method of construction, are works of a master, or display high artistic value. Therefore, the property does not appear eligible for listing in the California Register under Criterion 3.

Criterion 4 – The resource is not likely to yield valuable information that will contribute to our understanding of human history because the resource is not and never was the principal source of important information pertaining to subjects such as botanical gardens; therefore, the property does not appear eligible for listing under California Register under Criterion 4.

In conclusion, the UCI Arboretum appears ineligible for listing in the California Register under Criteria 1, 2, 3, and 4 because it lacks association with a historic context. Additionally, the resource was evaluated in accordance with Section 15064.5(a)(2)–(3) of the CEQA Guidelines using the criteria outlined in Section 5024.1 of the California Public Resources Code, and it is not a historical resource for the purposes of CEQA.

P-30-000115/CA-ORA-000115

This site was originally recorded in 1963 and has been investigated several times since. The site is considered eligible for the California Register under Criterion 4 as it is likely to yield important information about prehistory. The presence of shell at the ground surface and undisturbed soils observed during the current survey corroborate results of previous investigations of the site (King 1963; Jones 1976) and indicate that subsurface archaeological deposits may be present in Locus B, an area currently undeveloped. Hurd and Macko (1989) provide a good review of the site including specific details on artifact locations, distributions, and research potential. They suggest the site may contribute to an understanding of Native American subsistence strategies during this period based on the presence of datable carbon and artifacts suggestive of discrete activities within the site. The site has also yielded shell beads, which are further evidence of an economy utilizing marine resources.

5.0 SUMMARY AND RECOMMENDATIONS

5.1 BUILT ENVIRONMENT RESOURCES

Two built environment resources are located within the project area. Both resources were evaluated and recommended ineligible for inclusion in the California Register. Please see Appendix D for the full evaluations.

Resource Name	Eligibility to the California Register	Historical Resource for the Purposes of CEQA
UCI North Campus	Not eligible	No
UCI Arboretum	Not eligible	No

5.2 ARCHAEOLOGICAL RESOURCES

One archaeological resource was identified within the project area. See below for a summary and recommendations for the resource.

Resource Name and Number	Eligibility to the California Register	Project Activities	Impact	Recommendations
P-30-000115/ CA-ORA-000115	Recommended potentially eligible	Destruction for hospital and parking lot	Significant	Data recovery and treatment of human remains See MM-1 and MM-2

P-30-000115/CA-ORA-000115

This previously identified site is considered to be potentially eligible for listing in California Register under Criterion 4 as it is likely to yield important information about prehistory. The presence of shell at the ground surface and undisturbed soils observed during the current survey corroborate results of previous investigations of the site (King 1963; Jones 1976) and indicate that subsurface archaeological deposits may be present in Locus B, an area currently undeveloped. Hurd and Macko (1989) provide a good review of the site including specific details on artifact locations, distributions, and research potential. They suggest the site may contribute to an understanding of Native American subsistence strategies during this period based on the presence of datable carbon and artifacts suggestive of discrete activities within the site. The site has also yielded shell beads, which are further evidence of an economy utilizing marine resources. Because the project proposes full buildout of the project area within Locus B and destruction of the site, data recovery is required within Locus B, but must also take into consideration areas within the project area that are mapped outside the current archaeological site boundaries because site boundaries are not definitive and the project area is sensitive for further archaeological materials not previously

mapped. The area included for data recovery encompasses the Locus B, as well as Locus A due to its proximity to Locus B.

Because previous investigations indicate the high likelihood of archeological resources being present in Locus B, and because avoidance is not possible and the site will be destroyed, even with mitigation, this would be a significant and unavoidable impact. See mitigation measure MM-1 below. See Figure 6 for the location requiring data recovery.

5.2.1 MITIGATION MEASURES

Archaeological Mitigation Measures

MM-1 Data Recovery – Site P-30-000115

Because avoidance of this significant archaeological site is not feasible, UCI shall prepare a Data Recovery Plan for the loss of this significant resource as a result of the site development. The Data Recovery Plan is the systematic recovery of site data, including artifacts, stratigraphy, and cultural features, that contribute to our understanding of site activities, function, temporal and/or cultural associations, and other site information. Data recovery itself will result in the destruction of the site; however, the systematic and professional recovery of data using archaeological methods of research, excavation, analysis, and interpretation, through controlled excavation, is required for the loss of the site. The Data Recovery Plan will be developed and submitted to UCI in accordance with applicable professional guidelines by a Secretary of the Interior Professionally Qualified archaeologist and/or Registered Professional Archaeologist, and in consistency with UCI's LRDP EIR mitigation measure Cul-1A and Cul-1B.

MM-2 Treatment of previously unidentified human remains

Any human remains encountered during project ground-disturbing activities shall be treated in accordance with California Health and Safety Code Section 7050.5. There shall be no further excavation or disturbance of the site or any nearby area reasonably suspected to overlie adjacent remains until the County coroner has determined the manner and cause of any death, and the recommendations concerning the treatment and disposition of the human remains have been made to the person responsible for the excavation or to his or her authorized representative. Project personnel/construction workers shall not collect or move any human remains and associated materials. If the human remains are of Native American origin, the coroner must notify the NAHC within 24 hours of this identification. The NAHC will immediately identify a Native American most likely descendant to inspect the site and provide recommendations within 48 hours for the proper treatment of the remains and associated grave goods.

Paleontological Mitigation Measures

As identified in the 2007 UCI LRDP EIR, the project area, is rated as High Sensitivity for paleontological resources. Therefore, mitigation measures Cul-4A through Cul-4C apply to the project (see Section 2.2).

6.0 PROFESSIONAL QUALIFICATIONS

This report was prepared by Michael Baker International senior cultural resources manager Margo Nayyar and archaeologist Brian Seymour.

Ms. Nayyar is an architectural historian with ten years of cultural management experience in California. Her experience includes built environment surveys, evaluation of historic-era resources using guidelines outlined in the National and California Registers, and preparation of cultural resources technical studies pursuant to CEQA and Section 106 of the National Historic Preservation Act including identification studies, finding of effect documents, memorandum of agreements, programmatic agreements, and Historic American Buildings Survey, Historic American Engineering Record, and Historic American Landscape Survey mitigation documentation. She prepares cultural resources environmental document sections for CEQA environmental documents including infill checklists, initial studies, and environmental impact reports, as well as National Environmental Policy Act environmental documents including environmental impact statements. She also specializes in municipal preservation planning, historic preservation ordinance updates, Native American consultation, and provision of Certified Local Government training to interested local governments. She develops Survey 123 and ESRI Collector applications for large-scale historic resources surveys and authors National Register nomination packets. Ms. Nayyar meets the Secretary of the Interior's Professional Qualification Standards for history and architectural history.

Mr. Seymour is a Principal Investigator and field supervisor experienced in all phases of archaeological excavation, both historic and prehistoric, throughout the eastern and southern US as well as several foreign locations. With an MSc in maritime archeology from the University of Southampton, his specialization in the field allows him to work on projects both on land and underwater. His background of prehistoric knowledge comes from surveys and excavations of projects ranging from large land parcels to narrow corridors. He has excavated sites as shallow as few centimeters in rural uplands up to tens of meters deep in highly urbanized environments. Mr. Seymour is also well acquainted with historic structures surveying, historic background research, and archival research. In addition to his US experience, Mr. Seymour has worked both professionally and voluntarily on archaeological projects in four countries both on land and underwater. Throughout his graduate studies and professional life, he has presented original work in both academic and industry settings.

Cogstone conducted the cultural resources survey and geoarchaeological sensitivity analysis for the project. Below are individuals who contributed to this report.

Desireé Martinez, RPA, served as Co-Principal Investigator and provided overall QA/QC for the project. She has 22 years of experience in archaeological fieldwork, research, and curation. She has expertise in the planning, implementation, and completion of all phases of archaeological work and has participated in archaeological investigations as a principal investigator, crew member, and tribal monitor. She meets national standards in archaeology set by the Secretary of Interior's Standards and Guidelines for Archaeology and Historic Preservation. Her experience also includes compliance with CEQA, National Environmental Policy Act, National Historic Preservation Act Section 106, Native American Graves Protection and Repatriation Act, Senate Bill 18, Assembly Bill 52, California General Order 131-D exemption, and other cultural resource laws. Ms. Martinez has managed technical assessments and prepared cultural resources sections for numerous environmental compliance documents. In addition, Ms. Martinez has extensive experience consulting with Native American leaders and community members in a variety of contexts.

John Gust, RPA, served as Task Manager and Co-Principal Investigator and reviewed this report. Dr. Gust has over 17 years of experience in field archaeology and also serves as Cogstone's Lab

Manager. He meets the qualifications required by the Secretary of the Interior's Standards and Guidelines for Archaeology and Historic Preservation and his field expertise includes pedestrian surveys, excavation monitoring, resource recording, and historic artifact analysis.

Holly Duke authored the archaeological survey portions of the report. Ms. Duke is a qualified archaeologist and cross-trained paleontologist with over six years of experience in pedestrian survey, monitoring, excavation and burial recovery, as well as the identification of human and faunal skeletal remains. Ms. Duke is proficient in the preparation of cultural resources assessment reports for a variety of state and local agencies throughout California. She is responsible for the organization of field data, lab supervision, and organization, as well as identifying and cataloging prehistoric and historic artifacts. She also has experience with preparing artifact collections for curation at a variety of different repositories as well as fossil preparation and stabilization.

Kim Scott served as geoarchaeologist and prepared the geoarchaeological sections of this report. Ms. Scott has 21 years of experience in California as a paleontologist and sedimentary geologist. She is a member of the Society of Vertebrate Paleontology and the Geological Society of America. Ms. Scott has worked extensively in the field surveying, monitoring, and salvaging fossils on over 100 projects. In addition, she has special skills in jacketing large fossils, fossil preparation (cleaning and stabilization), and the preparation of stratigraphic sections and other documentation for fossil localities. She has written over 100 paleontological assessments, paleontological mitigation plans, and monitoring compliance reports to all agency requirements. She authors and conducts crew sensitivity training, serves as company safety officer, and has authored both the company safety and paleontology manuals.

Edgar Alvarez conducted the intensive pedestrian survey. Mr. Alvarez is an archaeologist and cross-trained paleontologist with three years of experience in archaeological and paleontological monitoring, surveying, and excavation in Southern California. Mr. Alvarez is proficient in GIS and specializes in ESRI's ArcGIS software. From 2015 to 2016, he served as a collections volunteer at the UCLA Fowler Museum where he created, edited, and updated catalogs for accessions, completed osteological identification forms on skeletal/faunal remains, and cataloged artifacts. Mr. Alvarez is also a member of both the Society for California Archaeology and the Society for American Archaeology.

7.0 REFERENCES CITED

- ARI. 1976. Annual Report to TIC from ARI. On file at the South Central Coastal Information Center.
- Bean, L. J. and F. C. Shipek. 1978. "Luiseño." *Handbook of North American Indians*, edited by R. F. Heizer. 9:550-563. Washington, DC: Smithsonian Institution.
- Bean, L. J. and C. R. Smith. 1978. "Gabrielino." *Handbook of North American Indians*, edited by R. F. Heizer. 9:538-549. Washington, DC: Smithsonian Institution.
- Bissell, Ronald M. 1988. "Archaeological Resources Reconnaissance of the Long Range Development Plan Study Area, University of California, Irvine, Orange County, California." RMW Paleo Associates, Inc. On file at the South Central Coastal Information Center.
- Bissell, Ronald M. and Rod Raschke. 1988. "Cultural and Paleontological Resources Reconnaissance of the Long Range Development Plan Study Area, University of California, Irvine, Orange County, California." RMW Paleo Associates, Inc. On file at the South Central Coastal Information Center.
- BLM (Bureau of Land Management). 1865. Township 6 South, Range 9 West, San Bernardino Base Line Meridian. Electronic document, https://gloreports.blm.gov/details/survey/default.aspx?dm_id=291043&sid=qgvujfoo.5jc&surveyDetailsTabIndex=1#surveyDetailsTabIndex=0, accessed multiple.
- Brock, J. 1985a. Site Record for CA-ORA115a. On file at the South Central Coastal Information Center.
- _____. 1985b. Site Record for CA-ORA115b. On file at the South Central Coastal Information Center.
- _____. 1985c. Site Record for CA-ORA121b. On file at the South Central Coastal Information Center.
- Brock, James, Mark A. Roeder, and John F. Elliott. 1985. "Archaeological, Paleontological, and Historical Resources Assessment Report for the U. C. Irvine North Campus Property." Prepared for the Office of Physical Planning, University of California, Irvine. Archaeological Advisory Group. Newport Beach, California.
- Cox, L.E. 2006. Oral history interview with L.E. Cox by Spencer C. Olin. Electronic document, <http://ucispace.lib.uci.edu/bitstream/handle/10575/5965/coxmar2006.pdf?sequence=2>, accessed multiple.
- Desautels, Roger J. 1978. "Cultural Resources Report – Preliminary Assessment on the Proposed San Diego Creek Watershed Erosion and Sedimentary Control System in Hicks Canyon, Hicks Canyon Wash, Rattlesnake Creek Wash, San Diego Creek, and the San Joaquin Marsh Located in Orange County." California Scientific Resource Surveys, Inc. On file at the South Central Coastal Information Center.
- Egan, Richard. 1878. "Manuscript Map of Rancho San Joaquin." Electronic document, <https://oac.cdlib.org/ark:/13030/hb567nb2vj/?brand=oac4>, accessed multiple.
- Finley, S.H. 1889. "Map of Orange County, California." Electronic document, <https://secretmuseum.net/san-joaquin-valley-california-map/san-joaquin-valley->

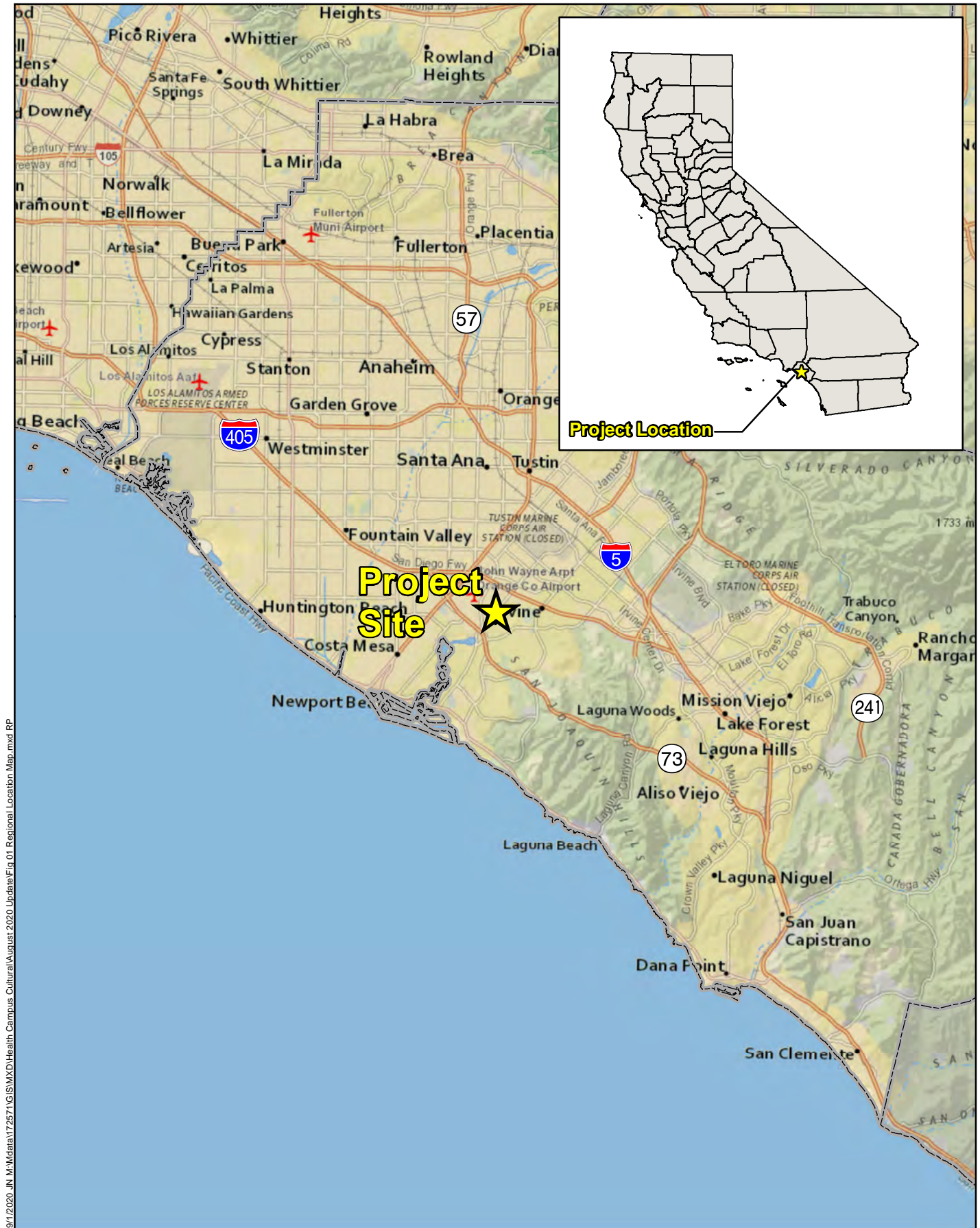
- [california-map-california-city-map-coachella-valley-map-california-printable/](#), accessed multiple.
- Funding Universe. 2019. "Butler Manufacturing Company History." Electronic resource, <http://www.fundinguniverse.com/company-histories/butler-manufacturing-company-history/>, accessed multiple.
- Getchell, Barbie and John E. Atwood. 2007. Cultural Resource Inventory of the San Joaquin Freshwater Marsh Reserve Phase II Enhancement Plan Project Area in the City of Irvine, Orange County, California. Prepared by PAST, Inc. Encino, California.
- Hafner and McKinney. 1970. Site Record for CA-ORA-287. On file at the South Central Coastal Information Center.
- Historicaerials.com. 2019. Contemporary and historic aerial photographs. Electronic resource, <https://www.historicaerials.com/viewer>, accessed multiple.
- Hurd, Gary S. and Michael E. Macko. 1989. "Archaeological Test Results, Significance Evaluations, and Recommendations for Mitigation of Impacts at CA-ORA-115A, -115B, -116, & -121B University of California, Irvine North Campus." The Keith Companies Archaeological Division. On file at the South Central Coastal Information Center.
- Jones, Howard. 1976a. Site Record for CA-ORA115a. On file at the South Central Coastal Information Center.
- _____. 1976b. Site Record for CA-ORA115b. On file at the South Central Coastal Information Center.
- King, C. 1963a. Site Record for CA-ORA115a. On file at the South Central Coastal Information Center.
- _____. 1963b. Site Record for CA-ORA115b. On file at the South Central Coastal Information Center.
- Long, S and C. Schwartz. 1963. Site Record for CA-ORA-121. On file at the South Central Coastal Information Center.
- Masters, Nathan. 2015. "Terraforming the Irvine Ranch and the Construction of UC Irvine." Electronic resource, <https://www.kcet.org/shows/lost-la/terraforming-the-irvine-ranch-and-the-construction-of-uc-irvine>, accessed multiple.
- Morton, D. M. and F. K. Miller. 2006. Geology map of the San Bernardino and Santa Ana 30' x 60' quadrangles, California; Geology and description of map units, version 1.0. Digital preparation by Cossette, P. M. and K. R. Bovard. USGS Open File Report 2006-1217, scale 1:100,000.
- NPS (National Park Service). 1997a. *National Register Bulletin 15: How to Apply the National Register Criterion for Evaluation*. US Department of the Interior.
- _____. 1997b. *National Register Bulletin 16a: How to Complete the National Register Registration Form*. US Department of the Interior.
- OHP (California Office of Historic Preservation). 1976. California Inventory of Historic Resources.

-
- . 1992. Points of Historical Interest.
- . 1995. Instructions for Recording Historical Resources. Office of Historic Preservation, Sacramento.
- . 1996. California Historical Landmarks.
- . 2001a. "California Environmental Quality Act (CEQA) and Historical Resources." Technical Assistance Series #1. California Department of Parks and Recreation, Sacramento.
- . 2001b. "California Register of Historical Resources: Questions and Answers for Local Governments." Technical Assistance Series #4. California Department of Parks and Recreation, Sacramento.
- . 2006. "California Register and National Register: A Comparison (for purposes of determining eligibility for the California Register)." Technical Assistance Series #6. California Department of Parks and Recreation, Sacramento.
- . 2012a. Archaeological Determinations of Eligibility.
- . 2012b. Directory of Properties in the Historic Property Data File.
- Padon, Beth and Bill Breece. 1985. "Archaeological Resource Inventory City of Irvine and its Sphere of Influence." LSA Associates, Inc. On file at the South Central Coastal Information Center.
- Petra Resources, Inc. 1993. Site Record for CA-ORA-287b. On file at the South Central Coastal Information Center.
- Schroth, Adella. 1979. "The History of Archaeological Research on Irvine Ranch Property: The Evolution of a Company Tradition." Archaeological Resource Management Corp. On file at the South Central Coastal Information Center.
- Shinn, Juanita R. 1991. Site Record for CA-ORA21a. On file at the South Central Coastal Information Center.
- Stickel, E. Gary, and Jerry B. Howard. 1976. "Final Report of a Cultural Resource Survey of the University of California, Irvine." On file at the South Central Coastal Information Center.
- Strozier, Hardy. 1978. "The Irvine Company Planning Process and California Archaeology – A Review and Critique." The Irvine Company. On file at the South Central Coastal Information Center.
- Strudwick, Ivan. 1996. Site Record for CA-ORA-121. On file at the South Central Coastal Information Center.
- . 1998. Site Record for CA-ORA-121. On file at the South Central Coastal Information Center.
- UCI (University of California Irvine). 1968. University of California, Irvine 1968-69 Catalogue. Electronic resource, <http://ucispace.lib.uci.edu/handle/10575/12696>, accessed multiple.
- . 2008. "UC Irvine's first employee, L.E. Cox, dies at 94."

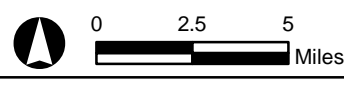
- Electronic resource, <https://news.uci.edu/2008/08/28/uc-irvines-first-employee-l-e-cox-dies-at-94/>, accessed multiple
- _____. 2010. *Physical Design Framework: A Vision for the Physical Environment at the University of California, Irvine*. Electronic document, <https://www.ceplanning.uci.edu/PhysicalPlanning/PhysicalDesignFramework.pdf>, accessed multiple.
- _____. 2019a. UCI 50th Anniversary Celebration. Electronic resource, <http://50th.uci.edu/blog/category/timeline/index.html>, accessed multiple.
- _____. 2019b. "UCI School of Biological Sciences: About Us." Electronic resource, <https://arboretum.bio.uci.edu/about-us/>, accessed multiple.
- UCD (University of California Davis) 2019. National Resources Conservation Service California Soils Resource Lab. <http://casoilresource.lawr.ucdavis.edu/soilweb-apps>, accessed July 2019.
- USDA-NRCS (United States Department of Agriculture National Resources Conservation Service). 2019. Official Soil Series Descriptions. <https://soilseries.sc.egov.usda.gov/osdname.aspx>, accessed July 2019.
- USGS (US Geological Survey). 1896. *Santa Ana, Calif.* 1:250,000 scale topographic quadrangle.
- _____. 1901. *Santa Ana, Calif.* 1:250,000 scale topographic quadrangle.
- _____. 1932. *Tustin, Calif.* 1:31,680 scale topographic quadrangle.
- _____. 1948. *Tustin, Calif.* 7.5-minute topographic quadrangle.
- _____. 1965. *Tustin, Calif.* 7.5-minute topographic quadrangle.
- _____. 1974. *Tustin, Calif.* 7.5-minute topographic quadrangle.
- Van Hook, Ed. 1966a. Site Record for CA-ORA115b. On file at the South Central Coastal Information Center.
- _____. 1966b. Site Record for CA-ORA-121a on file at the South Central Coastal Information Center.
- Wallace, W. J. 1955. A Suggested Chronology for Southern California Coastal Archaeology.
- William L. Pereira & Associates. 1963. Long Range Development Plan University of California Irvine, California. Electronic document, <https://calisphere.org/item/a46a2b94-f788-478d-b11b-3a0609539fdd/>, accessed multiple.

APPENDIX A

FIGURES



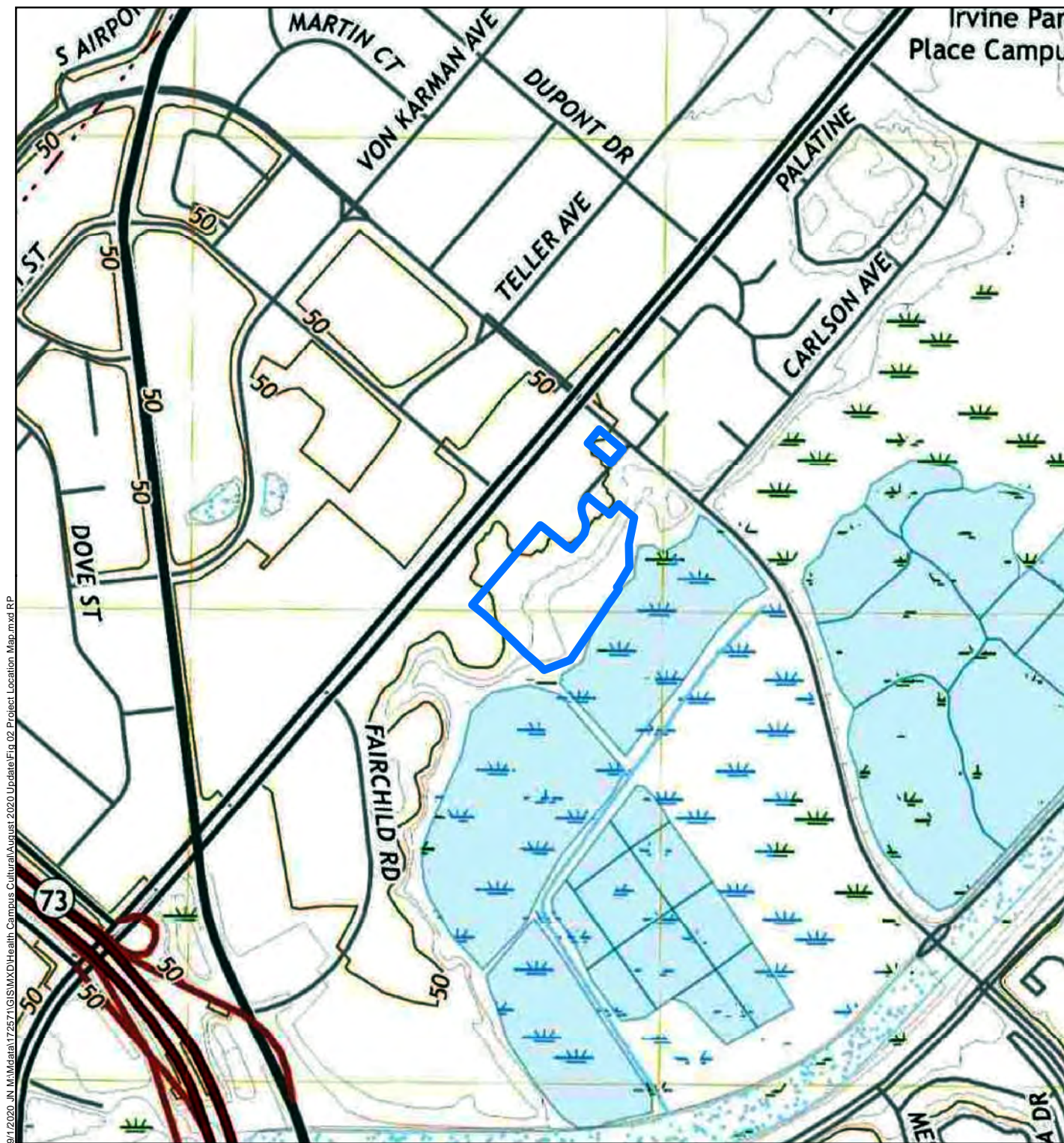
9/1/2020 J:\M:\data\172571\GIS\MXD\Health_Campus_Cultural\August_2020_Update\Fig_01_Regional_Location_Map.mxd RP



Source: ArcGIS Online, 2018

Regional Location Map

Figure 1



9/1/2020, IN:\M\Meta\172571\GIS\MXD\Health_Campus_Cultural\August_2020_Update\Fig_02_Project_Location_Map.mxd RP

Legend


 Project Area

Figure 2



Legend

- Project Area
- ICMC Project Site
- San Joaquin Marsh Development Buffer
- Laydown Area
- Temporary Parking Area



0 65 130
Feet

9/1/2020_JN_M:\Mdata\172571\GIS\MXD\Health Campus Cultural August 2020 Update\Fig 03 Project Area.mxd RP

Figures 4-6 Redacted

APPENDIX B
TRIBAL CONSULTATION LOG

NATIVE AMERICAN HERITAGE COMMISSION
Cultural and Environmental Department
1550 Harbor Blvd., Suite 100
West Sacramento, CA 95691
Phone: (916) 373-3710
Email: nahc@nahc.ca.gov
Website: <http://www.nahc.ca.gov>
Twitter: @CA_NAHC



May 17, 2019

Margo Nayyar
Michael Baker International

VIA Email to: margo.nayyar@mbakerintl.com

RE: UC Irvine Hospital Health Campus Project, Orange County

Dear Ms. Nayyar:

A record search of the Native American Heritage Commission (NAHC) Sacred Lands File (SLF) was completed for the information you have submitted for the above referenced project. The results were positive. Please contact the Juaneno Band of Mission Indians Acjachemen Nation on the attached list for more information. Other sources of cultural resources should also be contacted for information regarding known and recorded sites.

Attached is a list of Native American tribes who may also have knowledge of cultural resources in the project area. This list should provide a starting place in locating areas of potential adverse impact within the proposed project area. I suggest you contact all of those indicated; if they cannot supply information, they might recommend others with specific knowledge. By contacting all those listed, your organization will be better able to respond to claims of failure to consult with the appropriate tribe. If a response has not been received within two weeks of notification, the Commission requests that you follow-up with a telephone call or email to ensure that the project information has been received.

If you receive notification of change of addresses and phone numbers from tribes, please notify the NAHC. With your assistance, we can assure that our lists contain current information. If you have any questions or need additional information, please contact me at my email address: steven.quinn@nahc.ca.gov.

Sincerely,

A handwritten signature in blue ink that reads "Steven Quinn".

Steven Quinn
Associate Governmental Program Analyst

Attachment

**Native American Heritage Commission
Native American Contact List
Orange County
5/17/2019**

Agua Caliente Band of Cahuilla Indians

Patricia Garcia-Plotkin, Director
5401 Dinah Shore Drive Cahuilla
Palm Springs, CA, 92264
Phone: (760) 699 - 6907
Fax: (760) 699-6924
ACBCI-THPO@aguacaliente.net

Agua Caliente Band of Cahuilla Indians

Jeff Grubbe, Chairperson
5401 Dinah Shore Drive Cahuilla
Palm Springs, CA, 92264
Phone: (760) 699 - 6800
Fax: (760) 699-6919

Gabrieleno Band of Mission Indians - Kizh Nation

Andrew Salas, Chairperson
P.O. Box 393 Gabrieleno
Covina, CA, 91723
Phone: (626) 926 - 4131
admin@gabrielenoindians.org

Gabrieleno/Tongva San Gabriel Band of Mission Indians

Anthony Morales, Chairperson
P.O. Box 693 Gabrieleno
San Gabriel, CA, 91778
Phone: (626) 483 - 3564
Fax: (626) 286-1262
GTTribalcouncil@aol.com

Gabrielino /Tongva Nation

Sandonne Goad, Chairperson
106 1/2 Judge John Aiso St., Gabrielino
#231
Los Angeles, CA, 90012
Phone: (951) 807 - 0479
sgoad@gabrielino-tongva.com

Gabrielino Tongva Indians of California Tribal Council

Robert Dorame, Chairperson
P.O. Box 490 Gabrielino
Bellflower, CA, 90707
Phone: (562) 761 - 6417
Fax: (562) 761-6417
gtongva@gmail.com

Gabrielino-Tongva Tribe

Charles Alvarez,
23454 Vanowen Street Gabrielino
West Hills, CA, 91307
Phone: (310) 403 - 6048
roadkingcharles@aol.com

Juaneno Band of Mission Indians

Sonia Johnston, Chairperson
P.O. Box 25628 Juaneno
Santa Ana, CA, 92799
sonia.johnston@sbcglobal.net

Juaneno Band of Mission Indians Acjachemen Nation - Belardes

Joyce Perry, Tribal Manager
4955 Paseo Segovia Juaneno
Irvine, CA, 92603
Phone: (949) 293 - 8522
kaamalam@gmail.com

Juaneno Band of Mission Indians Acjachemen Nation

Matias Belardes, Chairperson
32161 Avenida Los Amigos Juaneno
San Juan Capistrano, CA, 92675
Phone: (949) 293 - 8522
kaamalam@gmail.com

Juaneno Band of Mission Indians Acjachemen Nation - Romero

Teresa Romero, Chairperson
31411-A La Matanza Street Juaneno
San Juan Capistrano, CA, 92675
Phone: (949) 488 - 3484
Fax: (949) 488-3294
tromero@juaneno.com

La Jolla Band of Luiseno Indians

Fred Nelson, Chairperson
22000 Highway 76 Luiseno
Pauma Valley, CA, 92061
Phone: (760) 742 - 3771

This list is current only as of the date of this document. Distribution of this list does not relieve any person of statutory responsibility as defined in Section 7050.5 of the Health and Safety Code, Section 5097.94 of the Public Resource Section 5097.98 of the Public Resources Code.

This list is only applicable for contacting local Native Americans with regard to cultural resources assessment for the proposed UC Irvine Hospital Health Campus Project, Orange County.

**Native American Heritage Commission
Native American Contact List
Orange County
5/17/2019**

Pala Band of Mission Indians

Shasta Gaughen, Tribal Historic
Preservation Officer
PMB 50, 35008 Pala Temecula Rd. Cupeno
Luiseno
Pala, CA, 92059
Phone: (760) 891 - 3515
Fax: (760) 742-3189
sgaughen@palatribe.com

Pauma Band of Luiseno Indians

Temet Aguilar, Chairperson
P.O. Box 369 Luiseno
Pauma Valley, CA, 92061
Phone: (760) 742 - 1289
Fax: (760) 742-3422
bennaecalac@aol.com

Pechanga Band of Luiseno Indians

Paul Macarro, Cultural Resources
Coordinator
P.O. Box 1477 Luiseno
Temecula, CA, 92593
Phone: (951) 770 - 6306
Fax: (951) 506-9491
pmacarro@pechanga-nsn.gov

Pechanga Band of Luiseno Indians

Mark Macarro, Chairperson
P.O. Box 1477 Luiseno
Temecula, CA, 92593
Phone: (951) 770 - 6000
Fax: (951) 695-1778
epreston@pechanga-nsn.gov

Rincon Band of Luiseno Indians

Bo Mazzetti, Chairperson
One Government Center Lane Luiseno
Valley Center, CA, 92082
Phone: (760) 749 - 1051
Fax: (760) 749-5144
bomazzetti@aol.com

Rincon Band of Luiseno Indians

Jim McPherson, Tribal Historic
Preservation Officer
One Government Center Lane Luiseno
Valley Center, CA, 92082
Phone: (760) 749 - 1051
Fax: (760) 749-5144
vwhipple@rincontribe.org

San Luis Rey Band of Mission Indians

San Luis Rey, Tribal Council
1889 Sunset Drive Luiseno
Vista, CA, 92081
Phone: (760) 724 - 8505
Fax: (760) 724-2172
cjmojado@slrmissionindians.org

San Luis Rey Band of Mission Indians

1889 Sunset Drive Luiseno
Vista, CA, 92081
Phone: (760) 724 - 8505
Fax: (760) 724-2172
cjmojado@slrmissionindians.org

Soboba Band of Luiseno Indians

Scott Cozart, Chairperson
P. O. Box 487 Cahuilla
Luiseno
San Jacinto, CA, 92583
Phone: (951) 654 - 2765
Fax: (951) 654-4198
jontiveros@soboba-nsn.gov

Soboba Band of Luiseno Indians

Joseph Ontiveros, Cultural
Resource Department
P.O. BOX 487 Cahuilla
Luiseno
San Jacinto, CA, 92581
Phone: (951) 663 - 5279
Fax: (951) 654-4198
jontiveros@soboba-nsn.gov

This list is current only as of the date of this document. Distribution of this list does not relieve any person of statutory responsibility as defined in Section 7050.5 of the Health and Safety Code, Section 5097.94 of the Public Resource Section 5097.98 of the Public Resources Code.

This list is only applicable for contacting local Native Americans with regard to cultural resources assessment for the proposed UC Irvine Hospital Health Campus Project, Orange County.

May 26, 2020

Mr. Andrew Salas
Gabrieleño Band of Mission Indians - Kizh Nation
P.O. Box 393
Covina, CA 91723

Subject: UCI Irvine Campus Medical Complex – Invitation for Consultation under AB 52

Dear Andrew,

The University of California, Irvine (UCI) is proposing to construct the Irvine Campus Medical Complex (proposed project) to provide inpatient, ambulatory, and emergency care services. The proposed five-to-seven-story buildings include an approximately 350,000-gross-square-foot (GSF) specialty hospital, 225,000 GSF ambulatory care center, 25,000 GSF central utility plant, and a 1400-space parking structure. Additional improvements proposed include outdoor public spaces and gardens, pedestrian trail improvements, and ornamental landscaping. Primary vehicular access to the project site would occur via two existing driveways on Jamboree Road at Birch Street and West Access Road.

The project site is located within UCI's North Campus and is surrounded by existing on- and off-campus development and undeveloped University-owned land. Surrounding uses include UCI service facilities to the northeast, undeveloped University property to the west, UC San Joaquin Marsh Reserve to the south, and off-campus retail and mixed-use development to the north and northwest across Jamboree Road.

The proposed project is anticipated to trigger the need for environmental analysis under the California Environmental Quality Act (CEQA). In accordance with AB 52, if the Gabrieleño Band of Mission Indians - Kizh Nation would like to request consultation with UCI regarding the proposed project, please respond to this letter to initiate consultation.

If you have any further questions regarding the Irvine Campus Medical Complex project, please contact Lindsey Hashimoto at (949) 824-8692 or hashimol@uci.edu.

Sincerely,



Richard Demerjian
Assistant Vice Chancellor
Physical & Environmental Planning

Attachments: Regional Location Map
Conceptual Site Plan

May 26, 2020

Ms. Joyce Stanfield Perry
Tribal Manager
4955 Paseo Segovia
Irvine, CA 92603

Subject: UCI Irvine Campus Medical Complex – Invitation for Consultation under AB 52

Dear Joyce,

The University of California, Irvine (UCI) is proposing to construct the Irvine Campus Medical Complex (proposed project) to provide inpatient, ambulatory, and emergency care services. The proposed five-to-seven-story buildings include an approximately 350,000-gross-square-foot (GSF) specialty hospital, 225,000 GSF ambulatory care center, 25,000 GSF central utility plant, and a 1400-space parking structure. Additional improvements proposed include outdoor public spaces and gardens, pedestrian trail improvements, and ornamental landscaping. Primary vehicular access to the project site would occur via two existing driveways on Jamboree Road at Birch Street and West Access Road.

The project site is located within UCI's North Campus and is surrounded by existing on- and off-campus development and undeveloped University-owned land. Surrounding uses include UCI service facilities to the northeast, undeveloped University property to the west, UC San Joaquin Marsh Reserve to the south, and off-campus retail and mixed-use development to the north and northwest across Jamboree Road.

The proposed project is anticipated to trigger the need for environmental analysis under the California Environmental Quality Act (CEQA). In accordance with AB 52, if the Juaneño Band of Mission Indians – Acjachemen Nation would like to request consultation with UCI regarding the proposed project, please respond to this letter to initiate consultation.

If you have any further questions regarding the Irvine Campus Medical Complex project, please contact Lindsey Hashimoto at (949) 824-8692 or hashimol@uci.edu.

Sincerely,



Richard Demerjian
Assistant Vice Chancellor
Physical & Environmental Planning

Attachments: Regional Location Map
Conceptual Site Plan

May 26, 2020

Agua Caliente Band of Cahuilla Indians
Patricia Garcia-Plotkin, Director
5401 Dinah Shore Drive
Palm Springs, CA 92264

Subject: UCI Irvine Campus Medical Complex – Invitation for Consultation under SB 18

Dear Patricia,

The University of California, Irvine (UCI) is proposing to construct the Irvine Campus Medical Complex (proposed project) to provide inpatient, ambulatory, and emergency care services. The proposed five-to-seven-story buildings include an approximately 350,000-gross-square-foot (GSF) specialty hospital, 225,000 GSF ambulatory care center, 25,000 GSF central utility plant, and a 1400-space parking structure. Additional improvements proposed include outdoor public spaces and gardens, pedestrian trail improvements, and ornamental landscaping. Primary vehicular access to the project site would occur via two existing driveways on Jamboree Road at Birch Street and West Access Road.

The project site is located within UCI's North Campus and is surrounded by existing on- and off-campus development and undeveloped University-owned land. Surrounding uses include UCI service facilities to the northeast, undeveloped University property to the west, UC San Joaquin Marsh Reserve to the south, and off-campus retail and mixed-use development to the north and northwest across Jamboree Road.

The proposed project is anticipated to trigger the need for environmental analysis under the California Environmental Quality Act (CEQA). In accordance with SB 18, if the Agua Caliente Band of Cahuilla Indians would like to request consultation with UCI regarding the proposed project, please respond to this letter to initiate consultation.

If you have any further questions regarding the Irvine Campus Medical Complex project, please contact Lindsey Hashimoto at (949) 824-8692 or hashimol@uci.edu.

Sincerely,



Richard Demerjian
Assistant Vice Chancellor
Physical & Environmental Planning

Attachments: Regional Location Map
Conceptual Site Plan

May 26, 2020

Agua Caliente Band of Cahuilla Indians
Jeff Grubbe, Chairperson
5401 Dinah Shore Drive
Palm Springs, CA 92264

Subject: UCI Irvine Campus Medical Complex – Invitation for Consultation under SB 18

Dear Jeff,

The University of California, Irvine (UCI) is proposing to construct the Irvine Campus Medical Complex (proposed project) to provide inpatient, ambulatory, and emergency care services. The proposed five-to-seven-story buildings include an approximately 350,000-gross-square-foot (GSF) specialty hospital, 225,000 GSF ambulatory care center, 25,000 GSF central utility plant, and a 1400-space parking structure. Additional improvements proposed include outdoor public spaces and gardens, pedestrian trail improvements, and ornamental landscaping. Primary vehicular access to the project site would occur via two existing driveways on Jamboree Road at Birch Street and West Access Road.

The project site is located within UCI's North Campus and is surrounded by existing on- and off-campus development and undeveloped University-owned land. Surrounding uses include UCI service facilities to the northeast, undeveloped University property to the west, UC San Joaquin Marsh Reserve to the south, and off-campus retail and mixed-use development to the north and northwest across Jamboree Road.

The proposed project is anticipated to trigger the need for environmental analysis under the California Environmental Quality Act (CEQA). In accordance with SB 18, if the Agua Caliente Band of Cahuilla Indians would like to request consultation with UCI regarding the proposed project, please respond to this letter to initiate consultation.

If you have any further questions regarding the Irvine Campus Medical Complex project, please contact Lindsey Hashimoto at (949) 824-8692 or hashimol@uci.edu.

Sincerely,



Richard Demerjian
Assistant Vice Chancellor
Physical & Environmental Planning

Attachments: Regional Location Map
Conceptual Site Plan

May 26, 2020

Gabrielino Tongva Indians of California Tribal Council
Robert Dorame, Chairperson
P.O. Box 490
Bellflower, CA 90707

Subject: UCI Irvine Campus Medical Complex – Invitation for Consultation under SB 18

Dear Robert,

The University of California, Irvine (UCI) is proposing to construct the Irvine Campus Medical Complex (proposed project) to provide inpatient, ambulatory, and emergency care services. The proposed five-to-seven-story buildings include an approximately 350,000-gross-square-foot (GSF) specialty hospital, 225,000 GSF ambulatory care center, 25,000 GSF central utility plant, and a 1400-space parking structure. Additional improvements proposed include outdoor public spaces and gardens, pedestrian trail improvements, and ornamental landscaping. Primary vehicular access to the project site would occur via two existing driveways on Jamboree Road at Birch Street and West Access Road.

The project site is located within UCI's North Campus and is surrounded by existing on- and off-campus development and undeveloped University-owned land. Surrounding uses include UCI service facilities to the northeast, undeveloped University property to the west, UC San Joaquin Marsh Reserve to the south, and off-campus retail and mixed-use development to the north and northwest across Jamboree Road.

The proposed project is anticipated to trigger the need for environmental analysis under the California Environmental Quality Act (CEQA). In accordance with SB 18, if the Gabrielino Tongva Indians of California Tribal Council would like to request consultation with UCI regarding the proposed project, please respond to this letter to initiate consultation.

If you have any further questions regarding the Irvine Campus Medical Complex project, please contact Lindsey Hashimoto at (949) 824-8692 or hashimol@uci.edu.

Sincerely,



Richard Demerjian
Assistant Vice Chancellor
Physical & Environmental Planning

Attachments: Regional Location Map
Conceptual Site Plan

May 26, 2020

Gabrielino-Tongva Tribe
Charles Alvarez
23454 Vanowen Street
West Hills, CA 91307

Subject: UCI Irvine Campus Medical Complex – Invitation for Consultation under SB 18

Dear Charles,

The University of California, Irvine (UCI) is proposing to construct the Irvine Campus Medical Complex (proposed project) to provide inpatient, ambulatory, and emergency care services. The proposed five-to-seven-story buildings include an approximately 350,000-gross-square-foot (GSF) specialty hospital, 225,000 GSF ambulatory care center, 25,000 GSF central utility plant, and a 1400-space parking structure. Additional improvements proposed include outdoor public spaces and gardens, pedestrian trail improvements, and ornamental landscaping. Primary vehicular access to the project site would occur via two existing driveways on Jamboree Road at Birch Street and West Access Road.

The project site is located within UCI's North Campus and is surrounded by existing on- and off-campus development and undeveloped University-owned land. Surrounding uses include UCI service facilities to the northeast, undeveloped University property to the west, UC San Joaquin Marsh Reserve to the south, and off-campus retail and mixed-use development to the north and northwest across Jamboree Road.

The proposed project is anticipated to trigger the need for environmental analysis under the California Environmental Quality Act (CEQA). In accordance with SB 18, if the Gabrielino-Tongva Tribe would like to request consultation with UCI regarding the proposed project, please respond to this letter to initiate consultation.

If you have any further questions regarding the Irvine Campus Medical Complex project, please contact Lindsey Hashimoto at (949) 824-8692 or hashimol@uci.edu.

Sincerely,



Richard Demerjian
Assistant Vice Chancellor
Physical & Environmental Planning

Attachments: Regional Location Map
Conceptual Site Plan

May 26, 2020

Gabrielino/Tongva Nation
Sandonne Goad, Chairperson
106 1/2 Judge John Aiso St, #231
Los Angeles, CA 90012

Subject: UCI Irvine Campus Medical Complex – Invitation for Consultation under SB 18

Dear Sandonne,

The University of California, Irvine (UCI) is proposing to construct the Irvine Campus Medical Complex (proposed project) to provide inpatient, ambulatory, and emergency care services. The proposed five-to-seven-story buildings include an approximately 350,000-gross-square-foot (GSF) specialty hospital, 225,000 GSF ambulatory care center, 25,000 GSF central utility plant, and a 1400-space parking structure. Additional improvements proposed include outdoor public spaces and gardens, pedestrian trail improvements, and ornamental landscaping. Primary vehicular access to the project site would occur via two existing driveways on Jamboree Road at Birch Street and West Access Road.

The project site is located within UCI's North Campus and is surrounded by existing on- and off-campus development and undeveloped University-owned land. Surrounding uses include UCI service facilities to the northeast, undeveloped University property to the west, UC San Joaquin Marsh Reserve to the south, and off-campus retail and mixed-use development to the north and northwest across Jamboree Road.

The proposed project is anticipated to trigger the need for environmental analysis under the California Environmental Quality Act (CEQA). In accordance with SB 18, if the Gabrielino/Tongva Nation would like to request consultation with UCI regarding the proposed project, please respond to this letter to initiate consultation.

If you have any further questions regarding the Irvine Campus Medical Complex project, please contact Lindsey Hashimoto at (949) 824-8692 or hashimol@uci.edu.

Sincerely,



Richard Demerjian
Assistant Vice Chancellor
Physical & Environmental Planning

Attachments: Regional Location Map
Conceptual Site Plan

May 26, 2020

Gabrieleno/Tongva San Gabriel Band of Mission Indians
Anthony Morales, Chairperson
P.O. Box 693
San Gabriel, CA 91778

Subject: UCI Irvine Campus Medical Complex – Invitation for Consultation under SB 18

Dear Anthony,

The University of California, Irvine (UCI) is proposing to construct the Irvine Campus Medical Complex (proposed project) to provide inpatient, ambulatory, and emergency care services. The proposed five-to-seven-story buildings include an approximately 350,000-gross-square-foot (GSF) specialty hospital, 225,000 GSF ambulatory care center, 25,000 GSF central utility plant, and a 1400-space parking structure. Additional improvements proposed include outdoor public spaces and gardens, pedestrian trail improvements, and ornamental landscaping. Primary vehicular access to the project site would occur via two existing driveways on Jamboree Road at Birch Street and West Access Road.

The project site is located within UCI's North Campus and is surrounded by existing on- and off-campus development and undeveloped University-owned land. Surrounding uses include UCI service facilities to the northeast, undeveloped University property to the west, UC San Joaquin Marsh Reserve to the south, and off-campus retail and mixed-use development to the north and northwest across Jamboree Road.

The proposed project is anticipated to trigger the need for environmental analysis under the California Environmental Quality Act (CEQA). In accordance with SB 18, if the Gabrieleno/Tongva San Gabriel Band of Mission Indians would like to request consultation with UCI regarding the proposed project, please respond to this letter to initiate consultation.

If you have any further questions regarding the Irvine Campus Medical Complex project, please contact Lindsey Hashimoto at (949) 824-8692 or hashimol@uci.edu.

Sincerely,



Richard Demerjian
Assistant Vice Chancellor
Physical & Environmental Planning

Attachments: Regional Location Map
Conceptual Site Plan

May 26, 2020

Gabrieleno Band of Mission Indians - Kizh Nation
Andrew Salas, Chairperson
P.O. Box 393
Covina, CA 91723

Subject: UCI Irvine Campus Medical Complex – Invitation for Consultation under SB 18

Dear Andrew,

The University of California, Irvine (UCI) is proposing to construct the Irvine Campus Medical Complex (proposed project) to provide inpatient, ambulatory, and emergency care services. The proposed five-to-seven-story buildings include an approximately 350,000-gross-square-foot (GSF) specialty hospital, 225,000 GSF ambulatory care center, 25,000 GSF central utility plant, and a 1400-space parking structure. Additional improvements proposed include outdoor public spaces and gardens, pedestrian trail improvements, and ornamental landscaping. Primary vehicular access to the project site would occur via two existing driveways on Jamboree Road at Birch Street and West Access Road.

The project site is located within UCI's North Campus and is surrounded by existing on- and off-campus development and undeveloped University-owned land. Surrounding uses include UCI service facilities to the northeast, undeveloped University property to the west, UC San Joaquin Marsh Reserve to the south, and off-campus retail and mixed-use development to the north and northwest across Jamboree Road.

The proposed project is anticipated to trigger the need for environmental analysis under the California Environmental Quality Act (CEQA). In accordance with SB 18, if the Gabrieleno Band of Mission Indians - Kizh Nation would like to request consultation with UCI regarding the proposed project, please respond to this letter to initiate consultation.

If you have any further questions regarding the Irvine Campus Medical Complex project, please contact Lindsey Hashimoto at (949) 824-8692 or hashimol@uci.edu.

Sincerely,



Richard Demerjian
Assistant Vice Chancellor
Physical & Environmental Planning

Attachments: Regional Location Map
Conceptual Site Plan

May 26, 2020

Juaneno Band of Mission Indians Acjachemen Nation
Matias Belardes, Chairperson
32161 Avenida Los Amigos
San Juan Capistrano, CA 92675

Subject: UCI Irvine Campus Medical Complex – Invitation for Consultation under SB 18

Dear Matias,

The University of California, Irvine (UCI) is proposing to construct the Irvine Campus Medical Complex (proposed project) to provide inpatient, ambulatory, and emergency care services. The proposed five-to-seven-story buildings include an approximately 350,000-gross-square-foot (GSF) specialty hospital, 225,000 GSF ambulatory care center, 25,000 GSF central utility plant, and a 1400-space parking structure. Additional improvements proposed include outdoor public spaces and gardens, pedestrian trail improvements, and ornamental landscaping. Primary vehicular access to the project site would occur via two existing driveways on Jamboree Road at Birch Street and West Access Road.

The project site is located within UCI's North Campus and is surrounded by existing on- and off-campus development and undeveloped University-owned land. Surrounding uses include UCI service facilities to the northeast, undeveloped University property to the west, UC San Joaquin Marsh Reserve to the south, and off-campus retail and mixed-use development to the north and northwest across Jamboree Road.

The proposed project is anticipated to trigger the need for environmental analysis under the California Environmental Quality Act (CEQA). In accordance with SB 18, if the Juaneno Band of Mission Indians Acjachemen Nation would like to request consultation with UCI regarding the proposed project, please respond to this letter to initiate consultation.

If you have any further questions regarding the Irvine Campus Medical Complex project, please contact Lindsey Hashimoto at (949) 824-8692 or hashimol@uci.edu.

Sincerely,



Richard Demerjian
Assistant Vice Chancellor
Physical & Environmental Planning

Attachments: Regional Location Map
Conceptual Site Plan

May 26, 2020

Juaneno Band of Mission Indians
Sonia Johnston, Chairperson
P.O. Box 25628
Santa Ana, CA 92799

Subject: UCI Irvine Campus Medical Complex – Invitation for Consultation under SB 18

Dear Sonia,

The University of California, Irvine (UCI) is proposing to construct the Irvine Campus Medical Complex (proposed project) to provide inpatient, ambulatory, and emergency care services. The proposed five-to-seven-story buildings include an approximately 350,000-gross-square-foot (GSF) specialty hospital, 225,000 GSF ambulatory care center, 25,000 GSF central utility plant, and a 1400-space parking structure. Additional improvements proposed include outdoor public spaces and gardens, pedestrian trail improvements, and ornamental landscaping. Primary vehicular access to the project site would occur via two existing driveways on Jamboree Road at Birch Street and West Access Road.

The project site is located within UCI's North Campus and is surrounded by existing on- and off-campus development and undeveloped University-owned land. Surrounding uses include UCI service facilities to the northeast, undeveloped University property to the west, UC San Joaquin Marsh Reserve to the south, and off-campus retail and mixed-use development to the north and northwest across Jamboree Road.

The proposed project is anticipated to trigger the need for environmental analysis under the California Environmental Quality Act (CEQA). In accordance with SB 18, if the Juaneno Band of Mission Indians would like to request consultation with UCI regarding the proposed project, please respond to this letter to initiate consultation.

If you have any further questions regarding the Irvine Campus Medical Complex project, please contact Lindsey Hashimoto at (949) 824-8692 or hashimol@uci.edu.

Sincerely,



Richard Demerjian
Assistant Vice Chancellor
Physical & Environmental Planning

Attachments: Regional Location Map
Conceptual Site Plan

May 26, 2020

Juaneno Band of Mission Indians Acjachemen Nation
Joyce Perry, Tribal Manager
4955 Paseo Segovia
Irvine, CA 92603

Subject: UCI Irvine Campus Medical Complex – Invitation for Consultation under SB 18

Dear Joyce,

The University of California, Irvine (UCI) is proposing to construct the Irvine Campus Medical Complex (proposed project) to provide inpatient, ambulatory, and emergency care services. The proposed five-to-seven-story buildings include an approximately 350,000-gross-square-foot (GSF) specialty hospital, 225,000 GSF ambulatory care center, 25,000 GSF central utility plant, and a 1400-space parking structure. Additional improvements proposed include outdoor public spaces and gardens, pedestrian trail improvements, and ornamental landscaping. Primary vehicular access to the project site would occur via two existing driveways on Jamboree Road at Birch Street and West Access Road.

The project site is located within UCI's North Campus and is surrounded by existing on- and off-campus development and undeveloped University-owned land. Surrounding uses include UCI service facilities to the northeast, undeveloped University property to the west, UC San Joaquin Marsh Reserve to the south, and off-campus retail and mixed-use development to the north and northwest across Jamboree Road.

The proposed project is anticipated to trigger the need for environmental analysis under the California Environmental Quality Act (CEQA). In accordance with SB 18, if the Juaneno Band of Mission Indians Acjachemen Nation would like to request consultation with UCI regarding the proposed project, please respond to this letter to initiate consultation.

If you have any further questions regarding the Irvine Campus Medical Complex project, please contact Lindsey Hashimoto at (949) 824-8692 or hashimol@uci.edu.

Sincerely,



Richard Demerjian
Assistant Vice Chancellor
Physical & Environmental Planning

Attachments: Regional Location Map
Conceptual Site Plan

May 26, 2020

Juaneno Band of Mission Indians Acjachemen Nation
Teresa Romero, Chairperson
31411-A La Matanza Street
San Juan Capistrano, CA 92675

Subject: UCI Irvine Campus Medical Complex – Invitation for Consultation under SB 18

Dear Teresa,

The University of California, Irvine (UCI) is proposing to construct the Irvine Campus Medical Complex (proposed project) to provide inpatient, ambulatory, and emergency care services. The proposed five-to-seven-story buildings include an approximately 350,000-gross-square-foot (GSF) specialty hospital, 225,000 GSF ambulatory care center, 25,000 GSF central utility plant, and a 1400-space parking structure. Additional improvements proposed include outdoor public spaces and gardens, pedestrian trail improvements, and ornamental landscaping. Primary vehicular access to the project site would occur via two existing driveways on Jamboree Road at Birch Street and West Access Road.

The project site is located within UCI's North Campus and is surrounded by existing on- and off-campus development and undeveloped University-owned land. Surrounding uses include UCI service facilities to the northeast, undeveloped University property to the west, UC San Joaquin Marsh Reserve to the south, and off-campus retail and mixed-use development to the north and northwest across Jamboree Road.

The proposed project is anticipated to trigger the need for environmental analysis under the California Environmental Quality Act (CEQA). In accordance with SB 18, if the Juaneno Band of Mission Indians Acjachemen Nation would like to request consultation with UCI regarding the proposed project, please respond to this letter to initiate consultation.

If you have any further questions regarding the Irvine Campus Medical Complex project, please contact Lindsey Hashimoto at (949) 824-8692 or hashimol@uci.edu.

Sincerely,



Richard Demerjian
Assistant Vice Chancellor
Physical & Environmental Planning

Attachments: Regional Location Map
Conceptual Site Plan

May 26, 2020

Pauma Band of Luiseno Indians
Temet Aguilar, Chairperson
P.O. Box 369
Pauma Valley, CA 92061

Subject: UCI Irvine Campus Medical Complex – Invitation for Consultation under SB 18

Dear Temet,

The University of California, Irvine (UCI) is proposing to construct the Irvine Campus Medical Complex (proposed project) to provide inpatient, ambulatory, and emergency care services. The proposed five-to-seven-story buildings include an approximately 350,000-gross-square-foot (GSF) specialty hospital, 225,000 GSF ambulatory care center, 25,000 GSF central utility plant, and a 1400-space parking structure. Additional improvements proposed include outdoor public spaces and gardens, pedestrian trail improvements, and ornamental landscaping. Primary vehicular access to the project site would occur via two existing driveways on Jamboree Road at Birch Street and West Access Road.

The project site is located within UCI's North Campus and is surrounded by existing on- and off-campus development and undeveloped University-owned land. Surrounding uses include UCI service facilities to the northeast, undeveloped University property to the west, UC San Joaquin Marsh Reserve to the south, and off-campus retail and mixed-use development to the north and northwest across Jamboree Road.

The proposed project is anticipated to trigger the need for environmental analysis under the California Environmental Quality Act (CEQA). In accordance with SB 18, if the Pauma Band of Luiseno Indians would like to request consultation with UCI regarding the proposed project, please respond to this letter to initiate consultation.

If you have any further questions regarding the Irvine Campus Medical Complex project, please contact Lindsey Hashimoto at (949) 824-8692 or hashimol@uci.edu.

Sincerely,



Richard Demerjian
Assistant Vice Chancellor
Physical & Environmental Planning

Attachments: Regional Location Map
Conceptual Site Plan

May 26, 2020

Pechanga Band of Luiseno Indians
Paul Macarro, Cultural Resources
Coordinator
P.O. Box 1477
Temecula, CA, 92593

Subject: UCI Irvine Campus Medical Complex – Invitation for Consultation under SB 18

Dear Paul,

The University of California, Irvine (UCI) is proposing to construct the Irvine Campus Medical Complex (proposed project) to provide inpatient, ambulatory, and emergency care services. The proposed five-to-seven-story buildings include an approximately 350,000-gross-square-foot (GSF) specialty hospital, 225,000 GSF ambulatory care center, 25,000 GSF central utility plant, and a 1400-space parking structure. Additional improvements proposed include outdoor public spaces and gardens, pedestrian trail improvements, and ornamental landscaping. Primary vehicular access to the project site would occur via two existing driveways on Jamboree Road at Birch Street and West Access Road.

The project site is located within UCI's North Campus and is surrounded by existing on- and off-campus development and undeveloped University-owned land. Surrounding uses include UCI service facilities to the northeast, undeveloped University property to the west, UC San Joaquin Marsh Reserve to the south, and off-campus retail and mixed-use development to the north and northwest across Jamboree Road.

The proposed project is anticipated to trigger the need for environmental analysis under the California Environmental Quality Act (CEQA). In accordance with SB 18, if the Pechanga Band of Luiseno Indians would like to request consultation with UCI regarding the proposed project, please respond to this letter to initiate consultation.

If you have any further questions regarding the Irvine Campus Medical Complex project, please contact Lindsey Hashimoto at (949) 824-8692 or hashimol@uci.edu.

Sincerely,



Richard Demerjian
Assistant Vice Chancellor
Physical & Environmental Planning

Attachments: Regional Location Map
Conceptual Site Plan

May 26, 2020

Pechanga Band of Luiseno Indians
Mark Macarro, Chairperson
P.O. Box 1477
Temecula, CA 92593

Subject: UCI Irvine Campus Medical Complex – Invitation for Consultation under SB 18

Dear Mark,

The University of California, Irvine (UCI) is proposing to construct the Irvine Campus Medical Complex (proposed project) to provide inpatient, ambulatory, and emergency care services. The proposed five-to-seven-story buildings include an approximately 350,000-gross-square-foot (GSF) specialty hospital, 225,000 GSF ambulatory care center, 25,000 GSF central utility plant, and a 1400-space parking structure. Additional improvements proposed include outdoor public spaces and gardens, pedestrian trail improvements, and ornamental landscaping. Primary vehicular access to the project site would occur via two existing driveways on Jamboree Road at Birch Street and West Access Road.

The project site is located within UCI's North Campus and is surrounded by existing on- and off-campus development and undeveloped University-owned land. Surrounding uses include UCI service facilities to the northeast, undeveloped University property to the west, UC San Joaquin Marsh Reserve to the south, and off-campus retail and mixed-use development to the north and northwest across Jamboree Road.

The proposed project is anticipated to trigger the need for environmental analysis under the California Environmental Quality Act (CEQA). In accordance with SB 18, if the Pechanga Band of Luiseno Indians would like to request consultation with UCI regarding the proposed project, please respond to this letter to initiate consultation.

If you have any further questions regarding the Irvine Campus Medical Complex project, please contact Lindsey Hashimoto at (949) 824-8692 or hashimol@uci.edu.

Sincerely,



Richard Demerjian
Assistant Vice Chancellor
Physical & Environmental Planning

Attachments: Regional Location Map
Conceptual Site Plan

May 26, 2020

La Jolla Band of Luiseno Indians
Fred Nelson, Chairperson
22000 Highway 76
Pauma Valley, CA 92061

Subject: UCI Irvine Campus Medical Complex – Invitation for Consultation under SB 18

Dear Fred,

The University of California, Irvine (UCI) is proposing to construct the Irvine Campus Medical Complex (proposed project) to provide inpatient, ambulatory, and emergency care services. The proposed five-to-seven-story buildings include an approximately 350,000-gross-square-foot (GSF) specialty hospital, 225,000 GSF ambulatory care center, 25,000 GSF central utility plant, and a 1400-space parking structure. Additional improvements proposed include outdoor public spaces and gardens, pedestrian trail improvements, and ornamental landscaping. Primary vehicular access to the project site would occur via two existing driveways on Jamboree Road at Birch Street and West Access Road.

The project site is located within UCI's North Campus and is surrounded by existing on- and off-campus development and undeveloped University-owned land. Surrounding uses include UCI service facilities to the northeast, undeveloped University property to the west, UC San Joaquin Marsh Reserve to the south, and off-campus retail and mixed-use development to the north and northwest across Jamboree Road.

The proposed project is anticipated to trigger the need for environmental analysis under the California Environmental Quality Act (CEQA). In accordance with SB 18, if the La Jolla Band of Luiseno Indians would like to request consultation with UCI regarding the proposed project, please respond to this letter to initiate consultation.

If you have any further questions regarding the Irvine Campus Medical Complex project, please contact Lindsey Hashimoto at (949) 824-8692 or hashimol@uci.edu.

Sincerely,



Richard Demerjian
Assistant Vice Chancellor
Physical & Environmental Planning

Attachments: Regional Location Map
Conceptual Site Plan

May 26, 2020

Pala Band of Mission Indians
Shasta Gaughen, Tribal Historic Preservation Officer
PMB 50, 35008 Pala Temecula Rd.
Pala, CA 92059

Subject: UCI Irvine Campus Medical Complex – Invitation for Consultation under SB 18

Dear Shasta,

The University of California, Irvine (UCI) is proposing to construct the Irvine Campus Medical Complex (proposed project) to provide inpatient, ambulatory, and emergency care services. The proposed five-to-seven-story buildings include an approximately 350,000-gross-square-foot (GSF) specialty hospital, 225,000 GSF ambulatory care center, 25,000 GSF central utility plant, and a 1400-space parking structure. Additional improvements proposed include outdoor public spaces and gardens, pedestrian trail improvements, and ornamental landscaping. Primary vehicular access to the project site would occur via two existing driveways on Jamboree Road at Birch Street and West Access Road.

The project site is located within UCI's North Campus and is surrounded by existing on- and off-campus development and undeveloped University-owned land. Surrounding uses include UCI service facilities to the northeast, undeveloped University property to the west, UC San Joaquin Marsh Reserve to the south, and off-campus retail and mixed-use development to the north and northwest across Jamboree Road.

The proposed project is anticipated to trigger the need for environmental analysis under the California Environmental Quality Act (CEQA). In accordance with SB 18, if the Pala Band of Mission Indians would like to request consultation with UCI regarding the proposed project, please respond to this letter to initiate consultation.

If you have any further questions regarding the Irvine Campus Medical Complex project, please contact Lindsey Hashimoto at (949) 824-8692 or hashimol@uci.edu.

Sincerely,



Richard Demerjian
Assistant Vice Chancellor
Physical & Environmental Planning

Attachments: Regional Location Map
Conceptual Site Plan

May 26, 2020

Rincon Band of Luiseno Indians
Bo Mazzetti, Chairperson
One Government Center Lane
Valley Center, CA 92082

Subject: UCI Irvine Campus Medical Complex – Invitation for Consultation under SB 18

Dear Bo,

The University of California, Irvine (UCI) is proposing to construct the Irvine Campus Medical Complex (proposed project) to provide inpatient, ambulatory, and emergency care services. The proposed five-to-seven-story buildings include an approximately 350,000-gross-square-foot (GSF) specialty hospital, 225,000 GSF ambulatory care center, 25,000 GSF central utility plant, and a 1400-space parking structure. Additional improvements proposed include outdoor public spaces and gardens, pedestrian trail improvements, and ornamental landscaping. Primary vehicular access to the project site would occur via two existing driveways on Jamboree Road at Birch Street and West Access Road.

The project site is located within UCI's North Campus and is surrounded by existing on- and off-campus development and undeveloped University-owned land. Surrounding uses include UCI service facilities to the northeast, undeveloped University property to the west, UC San Joaquin Marsh Reserve to the south, and off-campus retail and mixed-use development to the north and northwest across Jamboree Road.

The proposed project is anticipated to trigger the need for environmental analysis under the California Environmental Quality Act (CEQA). In accordance with SB 18, if the Rincon Band of Luiseno Indians would like to request consultation with UCI regarding the proposed project, please respond to this letter to initiate consultation.

If you have any further questions regarding the Irvine Campus Medical Complex project, please contact Lindsey Hashimoto at (949) 824-8692 or hashimol@uci.edu.

Sincerely,



Richard Demerjian
Assistant Vice Chancellor
Physical & Environmental Planning

Attachments: Regional Location Map
Conceptual Site Plan

May 26, 2020

Rincon Band of Luiseno Indians
Jim McPherson, Tribal Historic Preservation Officer
One Government Center Lane
Valley Center, CA 92082

Subject: UCI Irvine Campus Medical Complex – Invitation for Consultation under SB 18

Dear Jim,

The University of California, Irvine (UCI) is proposing to construct the Irvine Campus Medical Complex (proposed project) to provide inpatient, ambulatory, and emergency care services. The proposed five-to-seven-story buildings include an approximately 350,000-gross-square-foot (GSF) specialty hospital, 225,000 GSF ambulatory care center, 25,000 GSF central utility plant, and a 1400-space parking structure. Additional improvements proposed include outdoor public spaces and gardens, pedestrian trail improvements, and ornamental landscaping. Primary vehicular access to the project site would occur via two existing driveways on Jamboree Road at Birch Street and West Access Road.

The project site is located within UCI's North Campus and is surrounded by existing on- and off-campus development and undeveloped University-owned land. Surrounding uses include UCI service facilities to the northeast, undeveloped University property to the west, UC San Joaquin Marsh Reserve to the south, and off-campus retail and mixed-use development to the north and northwest across Jamboree Road.

The proposed project is anticipated to trigger the need for environmental analysis under the California Environmental Quality Act (CEQA). In accordance with SB 18, if the Rincon Band of Luiseno Indians would like to request consultation with UCI regarding the proposed project, please respond to this letter to initiate consultation.

If you have any further questions regarding the Irvine Campus Medical Complex project, please contact Lindsey Hashimoto at (949) 824-8692 or hashimol@uci.edu.

Sincerely,



Richard Demerjian
Assistant Vice Chancellor
Physical & Environmental Planning

Attachments: Regional Location Map
Conceptual Site Plan

May 26, 2020

San Luis Rey Band of Mission Indians
San Luis Rey, Tribal Council
1889 Sunset Drive
Vista, CA 92081

Subject: UCI Irvine Campus Medical Complex – Invitation for Consultation under SB 18

Dear San Luis Rey Band of Mission Indians,

The University of California, Irvine (UCI) is proposing to construct the Irvine Campus Medical Complex (proposed project) to provide inpatient, ambulatory, and emergency care services. The proposed five-to-seven-story buildings include an approximately 350,000-gross-square-foot (GSF) specialty hospital, 225,000 GSF ambulatory care center, 25,000 GSF central utility plant, and a 1400-space parking structure. Additional improvements proposed include outdoor public spaces and gardens, pedestrian trail improvements, and ornamental landscaping. Primary vehicular access to the project site would occur via two existing driveways on Jamboree Road at Birch Street and West Access Road.

The project site is located within UCI's North Campus and is surrounded by existing on- and off-campus development and undeveloped University-owned land. Surrounding uses include UCI service facilities to the northeast, undeveloped University property to the west, UC San Joaquin Marsh Reserve to the south, and off-campus retail and mixed-use development to the north and northwest across Jamboree Road.

The proposed project is anticipated to trigger the need for environmental analysis under the California Environmental Quality Act (CEQA). In accordance with SB 18, if the San Luis Rey Band of Mission Indians would like to request consultation with UCI regarding the proposed project, please respond to this letter to initiate consultation.

If you have any further questions regarding the Irvine Campus Medical Complex project, please contact Lindsey Hashimoto at (949) 824-8692 or hashimol@uci.edu.

Sincerely,



Richard Demerjian
Assistant Vice Chancellor
Physical & Environmental Planning

Attachments: Regional Location Map
Conceptual Site Plan

May 26, 2020

Soboba Band of Luiseno Indians
Scott Cozart, Chairperson
P. O. Box 487
San Jacinto, CA 92583

Subject: UCI Irvine Campus Medical Complex – Invitation for Consultation under SB 18

Dear Scott,

The University of California, Irvine (UCI) is proposing to construct the Irvine Campus Medical Complex (proposed project) to provide inpatient, ambulatory, and emergency care services. The proposed five-to-seven-story buildings include an approximately 350,000-gross-square-foot (GSF) specialty hospital, 225,000 GSF ambulatory care center, 25,000 GSF central utility plant, and a 1400-space parking structure. Additional improvements proposed include outdoor public spaces and gardens, pedestrian trail improvements, and ornamental landscaping. Primary vehicular access to the project site would occur via two existing driveways on Jamboree Road at Birch Street and West Access Road.

The project site is located within UCI's North Campus and is surrounded by existing on- and off-campus development and undeveloped University-owned land. Surrounding uses include UCI service facilities to the northeast, undeveloped University property to the west, UC San Joaquin Marsh Reserve to the south, and off-campus retail and mixed-use development to the north and northwest across Jamboree Road.

The proposed project is anticipated to trigger the need for environmental analysis under the California Environmental Quality Act (CEQA). In accordance with SB 18, if the Soboba Band of Luiseno Indians would like to request consultation with UCI regarding the proposed project, please respond to this letter to initiate consultation.

If you have any further questions regarding the Irvine Campus Medical Complex project, please contact Lindsey Hashimoto at (949) 824-8692 or hashimol@uci.edu.

Sincerely,



Richard Demerjian
Assistant Vice Chancellor
Physical & Environmental Planning

Attachments: Regional Location Map
Conceptual Site Plan

May 26, 2020

Soboba Band of Luiseno Indians
Joseph Ontiveros
Cultural Resource Department
P.O. BOX 487
San Jacinto, CA 92581

Subject: UCI Irvine Campus Medical Complex – Invitation for Consultation under SB 18

Dear Joseph,

The University of California, Irvine (UCI) is proposing to construct the Irvine Campus Medical Complex (proposed project) to provide inpatient, ambulatory, and emergency care services. The proposed five-to-seven-story buildings include an approximately 350,000-gross-square-foot (GSF) specialty hospital, 225,000 GSF ambulatory care center, 25,000 GSF central utility plant, and a 1400-space parking structure. Additional improvements proposed include outdoor public spaces and gardens, pedestrian trail improvements, and ornamental landscaping. Primary vehicular access to the project site would occur via two existing driveways on Jamboree Road at Birch Street and West Access Road.

The project site is located within UCI's North Campus and is surrounded by existing on- and off-campus development and undeveloped University-owned land. Surrounding uses include UCI service facilities to the northeast, undeveloped University property to the west, UC San Joaquin Marsh Reserve to the south, and off-campus retail and mixed-use development to the north and northwest across Jamboree Road.

The proposed project is anticipated to trigger the need for environmental analysis under the California Environmental Quality Act (CEQA). In accordance with SB 18, if the Soboba Band of Luiseno Indians would like to request consultation with UCI regarding the proposed project, please respond to this letter to initiate consultation.

If you have any further questions regarding the Irvine Campus Medical Complex project, please contact Lindsey Hashimoto at (949) 824-8692 or hashimol@uci.edu.

Sincerely,



Richard Demerjian
Assistant Vice Chancellor
Physical & Environmental Planning

Attachments: Regional Location Map
Conceptual Site Plan

From: [Deneen Pelton](#)
To: [Lindsey Hashimoto](#)
Cc: [Cheryl Madrigal](#)
Subject: Irvine Campus Medical Complex
Date: Friday, June 5, 2020 1:59:50 PM
Attachments: [image001.jpg](#)
[SB18 Consultation Notification Response.docx](#)

Good afternoon,

See attached response for the project mentioned above. Thank you.

Deneen Pelton

Administrative Assistant II
Cultural Resources Department
Rincon Band of Luiseño Indians
One Government Center Lane | Valley Center, CA 92082
Office: 760-297-2635
Fax: 760-749-8901
Email: dpelton@rincon-nsn.gov

seal-rincon-website_03



This electronic message contains information generated by the USDA solely for the intended recipients. Any unauthorized interception of this message or the use or disclosure of the information it contains may violate the law and subject the violator to civil or criminal penalties. If you believe you have received this message in error, please notify the sender and delete the email immediately

Rincon Band of Luiseño Indians

CULTURAL RESOURCES DEPARTMENT

One Government Center Lane | Valley Center | CA 92082
(760) 749-1051 | Fax: (760) 749-8901 | rincon-nsn.gov



June 5, 2020

Sent via email: hashimol@uci.edu

Richard Demerjian

University of California, Irvine

Physical & Environmental Planning

4199 Campus Drive, Suite 380

Irvine, CA 92697-2325

Re: UCI Irvin Campus Medical Complex

Dear Mr. Demerjian,

This letter is written on behalf of Rincon Band of Luiseño Indians, (“Rincon Band” or “Band”), a federally recognized Indian Tribe and sovereign government.

The Band has received the notification for the above referenced project. The location identified within project documents is not within the Band’s specific Area of Historic Interest (AHI).

At this time, we have no additional information to provide. We recommend that you directly contact a Tribe that is closer to the project and may have pertinent information.

Thank you for submitting this project for Tribal review. If you have additional questions or concerns, please do not hesitate to contact our office at your convenience at (760) 297-2635 or via electronic mail at crd@rincon-nsn.gov.

Thank you for the opportunity to protect and preserve our cultural assets.

Sincerely,

Deneen Pelton

Administrative Assistant II

Culture Resource Department

dpelton@rincon-nsn.gov

From: [Lindsey Hashimoto](#)
To: [Joyce Perry](#)
Subject: RE: UCI Irvine Campus Medical Complex- AB 52/ SB 18
Attachments: [image001.png](#)

Hi Joyce,

Hope all is well and staying healthy. I just wanted to follow up and see if you had any comments on the scope of work for the extended Phase I.

Thanks,
Lindsey

From: Lindsey Hashimoto
Sent: Wednesday, July 22, 2020 2:42 PM
To: Joyce Perry <kaamalam@gmail.com>
Subject: RE: UCI Irvine Campus Medical Complex- AB 52/ SB 18

Hi Joyce,

To follow up on our call to discuss site P-30-000115, please see attached for the site form along with the proposal for the extended Phase I work as requested. As we discussed, Cogstone will be doing the groundwork. Please let me know if you need any additional documents for review.

Thanks,
Lindsey

From: Joyce Perry <kaamalam@gmail.com>
Sent: Tuesday, July 7, 2020 11:28 AM
To: Lindsey Hashimoto <hashimol@uci.edu>
Subject: Re: UCI Irvine Campus Medical Complex- AB 52/ SB 18

Hi Lindsey,

No problem, my mistake. We will talk tomorrow at 11:00 am.

Húu'uni 'óomaqati yáamaqati.
Teach peace
Joyce Stanfield Perry
Payomkawichum Kaamalam - President
Juaneño Band of Mission Indians, Acjachemen Nation
Tribal Manager, Cultural Resource Director

On Tue, Jul 7, 2020 at 11:20 AM Lindsey Hashimoto <hashimol@uci.edu> wrote:

Hi Joyce,

I'm on a conference call right now but I saw your voicemail. I believe our call is for tomorrow (7/8) at 11:00 am. Did you want to reschedule to another time?

Thanks,
Lindsey

Get [Outlook for iOS](#)

From: Lindsey Hashimoto
Sent: Monday, July 6, 2020 2:37:43 PM
To: Joyce Perry <kaamalam@gmail.com>
Subject: RE: UCI Irvine Campus Medical Complex- AB 52/ SB 18

Hi Joyce,

Wonderful. I will call you at the number below at 11:00 am Wednesday (7/8).

Thanks,
Lindsey

From: Joyce Perry <kaamalam@gmail.com>
Sent: Thursday, July 2, 2020 11:38 AM
To: Lindsey Hashimoto <hashimol@uci.edu>
Subject: Re: UCI Irvine Campus Medical Complex- AB 52/ SB 18

Lindsey,

I am free today until 2:00 or any time on Wednesday. You can reach me at (949) 293-8522

Húu'uni 'óomaqati yáamaqati.
Teach peace

Joyce Stanfield Perry

Payomkawichum Kaamalam - President

Juaneño Band of Mission Indians, Acjachemen Nation

Tribal Manager, Cultural Resource Director

On Tue, Jun 30, 2020 at 4:20 PM Lindsey Hashimoto <hashimol@uci.edu> wrote:

Hi Joyce,

A known archaeological site is located within the Irvine Campus Medical Complex project site, and I'd like to set up a call to discuss further with you regarding next steps. Please let me know if you are available at any of the following times:

- Thursday, 7/2: any time between 9:00 am and 2:00 pm
- Monday, 7/6: any time between 12:00 pm and 3:00 pm
- Wednesday, 7/8: any time after 11:00 am

Thanks,

Lindsey

From: Joyce Perry <kaamalam@gmail.com>

Sent: Tuesday, June 9, 2020 10:17 AM

To: Lindsey Hashimoto <hashimol@uci.edu>

Subject: Re: UCI Irvine Campus Medical Complex- AB 52/ SB 18

Good Morning Ms. Hashimoto,

Thank you for your response. We are in agreement with the need for both archaeo and native monitoring during ground disturbance. Can you please provide the text of the 2007 Long Range Development Plan (LRDP) EIR's mitigation measures Cul-1B and Cul-1C for review?

Additionally, we ask to be considered to provide monitoring for this project. Please see

our monitoring proposal below.

Thank you and I look forward to hearing from you.

Húu'uni 'óomaqati yáamaqati.
Teach peace

Joyce Stanfield Perry

Payomkawichum Kaamalam - President

Juaneño Band of Mission Indians, Acjachemen Nation

Tribal Manager, Cultural Resource Director

On Mon, Jun 8, 2020 at 4:39 PM Lindsey Hashimoto <hashimol@uci.edu> wrote:

Hi Joyce,

As part of the project-specific Phase I Cultural Resources Report, a Sacred Lands File search was initiated on May 2, 2019 and a response from Steven Quinn at NAHC was received on May 17, 2019, which included your contact information. A California Historical Resources Information Systems search was also conducted at the South Central Coastal Information Center on May 9, 2019.

As with all capital UCI projects, the project will have an archeological/paleontological monitor and a separate Native American monitor during earthwork. UCI will follow, at a minimum, the 2007 Long Range Development Plan (LRDP) EIR's mitigation measures Cul-1B (data recovery plan) and Cul-1C (procedures in the event of an unexpected archeological find). Project-specific mitigation may be added during the environmental review process.

If you have any additional questions regarding the project, please let me know and I'm happy to assist.

Thanks,

--

Lindsey Hashimoto

Senior Planner
Physical & Environmental Planning
949-824-8692
hashimol@uci.edu

University of California, Irvine
4199 Campus Drive, Suite 380
Irvine, CA 92697-2325



From: Joyce Perry <kaamalam@gmail.com>
Sent: Thursday, June 4, 2020 2:05 PM
To: Lindsey Hashimoto <hashimol@uci.edu>
Subject: Re: UCI Irvine Campus Medical Complex- AB 52/ SB 18

Good afternoon Ms. Hashimoto,

I am responding on behalf of the Juaneno Band of Mission Indians, Acjachemen Nation- Belardes to your letters pursuant to Sb 18 and AB 52 regarding the UCI Irvine Campus Medical Complex Project.

We request to consult with UCI regarding this project. Can you please tell me whether a Sacred Lands File search or a California Historical Resources Information Systems search has been completed for the project area?

Due to the fact that there are numerous culturally sensitive sites located within the UCI area, our preliminary recommendation is that Native and Archaeo monitors are required during all ground disturbing activities. Additionally, we ask that a treatment plan is put in place for any inadvertent discoveries.

Thank you and I look forward to hearing from you.

Húu'uni 'óomaqati yáamaqati.

Teach peace

Joyce Stanfield Perry

Payomkawichum Kaamalam - President

Juaneño Band of Mission Indians, Acjachemen Nation

Tribal Manager, Cultural Resource Director

From: [Lindsey Hashimoto](#)
To: [Andrew Salas](#); [Matthew Teutimez](#)
Cc: [Gabrieleno Administration](#)
Subject: RE: UCI Irvine Campus Medical Complex Project
Attachments: [image001.png](#)

All,

I just wanted to follow up to see if there are any comments regarding the extended Phase I scope of work.

Thanks,
Lindsey

From: Lindsey Hashimoto
Sent: Wednesday, July 22, 2020 3:18 PM
To: Andrew Salas <gabrielenoindians@yahoo.com>; Matthew Teutimez <matthew.teutimez@knrm-nsn.us>
Cc: Gabrieleno Administration <admin@gabrielenoindians.org>
Subject: RE: UCI Irvine Campus Medical Complex Project

Hi Andy and Matt,

Hope you're both doing well and staying healthy. To follow up with our call regarding the known cultural site located where the Irvine Campus Medical Complex project is proposed, I've attached the extended Phase I scope of work for your review. Please let me know if you have any questions regarding the scope or general project information.

Much appreciated,

--

Lindsey Hashimoto

Senior Planner
Physical & Environmental Planning
949-824-8692
hashimol@uci.edu

University of California, Irvine
4199 Campus Drive, Suite 380
Irvine, CA 92697-2325



From: Gabrieleno Administration <admin@gabrielenoindians.org>

Sent: Friday, June 19, 2020 10:43 AM

To: Lindsey Hashimoto <hashimol@uci.edu>

Subject: Re: UCI Irvine Campus Medical Complex Project

Thank you

Admin Specialist
Gabrieleno Band of Mission Indians - Kizh Nation
PO Box 393
Covina, CA 91723
Office: 844-390-0787
website: www.gabrielenoindians.org



The region where Gabrieleño culture thrived for more than eight centuries encompassed most of Los Angeles County, more than half of Orange County and portions of Riverside and San Bernardino counties. It was the labor of the Gabrieleño who built the missions, ranchos and the pueblos of Los Angeles. They were trained in the trades, and they did the construction and maintenance, as well as the farming and managing of herds of livestock. "The Gabrieleño are the ones who did all this work, and they really are the foundation of the early economy of the Los Angeles area ". "That's a contribution that Los Angeles has not recognized--the fact that in its early decades, without the Gabrieleño, the community simply would not have survived."

On Wed, Jun 17, 2020 at 5:17 PM Lindsey Hashimoto <hashimol@uci.edu> wrote:

Perfect, thank you. Please see attached for the Irvine Campus Medical Complex and University Hills Area 12 exhibits.

From: Gabrieleno Administration <admin@gabrielenoindians.org>

Sent: Wednesday, June 17, 2020 11:37 AM

To: Lindsey Hashimoto <hashimol@uci.edu>

Subject: Re: UCI Irvine Campus Medical Complex Project

Sounds good here is our call in number to dial (626)343-5588 Passcode 1234. Can you please provide a project map?

Admin Specialist
Gabrieleno Band of Mission Indians - Kizh Nation
PO Box 393
Covina, CA 91723
Office: 844-390-0787
website: www.gabrielenoindians.org



The region where Gabrieleño culture thrived for more than eight centuries encompassed most of Los Angeles County, more than half of Orange County and portions of Riverside and San Bernardino counties. It was the labor of the Gabrieleño who built the missions, ranchos and the pueblos of Los Angeles. They were trained in the trades, and they did the construction and maintenance, as well as the farming and managing of herds of livestock. “The Gabrieleño are the ones who did all this work, and they really are the foundation of the early economy of the Los Angeles area “. “That’s a contribution that Los Angeles has not recognized--the fact that in its early decades, without the Gabrieleño, the community simply would not have survived.”

On Tue, Jun 16, 2020 at 4:40 PM Lindsey Hashimoto <hashimol@uci.edu> wrote:

That would be wonderful. I am available for a call on June 23rd at 11:00 am.

From: Gabrieleno Administration <admin@gabrielenoindians.org>

Sent: Tuesday, June 16, 2020 4:37 PM

To: Lindsey Hashimoto <hashimol@uci.edu>

Subject: Re: UCI Irvine Campus Medical Complex Project

Hello Lindsey

We would like to accommodate to you and set up a date earlier. How does next Tuesday June 23rd at 11am sound?

Admin Specialist

Gabrieleno Band of Mission Indians - Kizh Nation

PO Box 393

Covina, CA 91723

Office: 844-390-0787

website: www.gabrielenoindians.org



The region where Gabrieleño culture thrived for more than eight centuries encompassed most of Los Angeles County, more than half of Orange County and portions of Riverside and San Bernardino counties. It was the labor of the Gabrieleño who built the missions, ranchos and the pueblos of Los Angeles. They were trained in the trades, and they did the construction and maintenance, as well as the farming and managing of herds of livestock. “The Gabrieleño are the ones who did all this work, and they really are the foundation of the early economy of the Los Angeles area “. “That’s a contribution that Los Angeles has not recognized--the fact that in its early decades, without the Gabrieleño, the community simply would not have survived.”

On Tue, Jun 16, 2020 at 4:27 PM Lindsey Hashimoto <hashimol@uci.edu> wrote:

I'm available August 13th at 11:00 am. What is the best number to call?

Thanks,
Lindsey

From: Gabrieleno Administration <admin@gabrielenoindians.org>

Sent: Tuesday, June 16, 2020 4:09 PM

To: Lindsey Hashimoto <hashimol@uci.edu>

Subject: Re: UCI Irvine Campus Medical Complex Project

Hello Lindsey

Thnak you for your email. The next time we have available will be on August 13th at 11am. Please get back to us to see if this time will work for you.

Thank you

Admin Specialist

Gabrieleno Band of Mission Indians - Kizh Nation

PO Box 393

Covina, CA 91723

Office: 844-390-0787

website: www.gabrielenoindians.org



The region where Gabrieleño culture thrived for more than eight centuries encompassed most of Los Angeles County, more than half of Orange County and portions of Riverside and San Bernardino counties. It was the labor of the Gabrieleño who built the missions, ranchos and the pueblos of Los Angeles. They were trained in the trades, and they did the construction and maintenance, as well as the farming and managing of herds of livestock. "The Gabrieleño are the ones who did all this work, and they really are the foundation of the early economy of the Los Angeles area ". "That's a contribution that Los Angeles has not recognized--the fact that in its early decades, without the Gabrieleño, the community simply would not have survived."

On Tue, Jun 16, 2020 at 2:23 PM Lindsey Hashimoto <hashimol@uci.edu> wrote:

Hi,

I have received your request for consultation under AB 52 and SB 18 and would like to schedule a call to discuss the project.

Thanks,

Lindsey

From: Gabrieleno Administration <admin@gabrielenoindians.org>

Sent: Tuesday, June 16, 2020 12:59 PM

To: Lindsey Hashimoto <hashimol@uci.edu>

Subject: UCI Irvine Campus Medical Complex Project

Please see attachments below.

Admin Specialist
Gabrieleno Band of Mission Indians - Kizh Nation
PO Box 393
Covina, CA 91723
Office: 844-390-0787
website: www.gabrielenoindians.org



The region where Gabrieleño culture thrived for more than eight centuries encompassed most of Los Angeles County, more than half of Orange County and portions of Riverside and San Bernardino counties. It was the labor of the Gabrieleño who built the missions, ranchos and the pueblos of Los Angeles. They were trained in the trades, and they did the construction and maintenance, as well as the farming and managing of herds of livestock. “The Gabrieleño are the ones who did all this work, and they really are the foundation of the early economy of the Los Angeles area “. “That’s a contribution that Los Angeles has not recognized--the fact that in its early decades, without the Gabrieleño, the community simply would not have survived.”

APPENDIX C
HISTORICAL SOCIETY
CONSULTATION

From: [Nayyar, Margo](#)
To: gail@irvineranchhistory.com
Bcc: [Nayyar, Margo](#)
Subject: Irvine Historical Society - Request for Consultation
Date: Wednesday, May 15, 2019 12:27:00 PM
Attachments: [5-15-2019 Irvine Historical Society.pdf](#)

Hello,

The University of California, Irvine (UCI) is proposing the Health Campus Hospital and Ambulatory Care Project in Irvine, Orange County, California. Michael Baker International is conducting a study to determine whether the project might affect historic properties. The proposed project is located on the UCI campus at the southwest corner of Jamboree Road and Campus Drive, as depicted in the attached letter and figures.

Please notify us if your organization has any information or concerns about historic properties in the project area. This is not a request for research; it is solely a request for public input for any concerns that the Historical Society may have. If you have any questions, please contact me at margo.nayyar@mbakerintl.com or (916) 231-2236.

Thank you,

Margo Nayyar | Architectural Historian
2729 Prospect Park Dr. Suite 220 | Rancho Cordova, CA 95670 | [O] 916-231-2236
margo.nayyar@mbakerintl.com | www.MBakerintl.com



May 15, 2019

IRVINE HISTORICAL SOCIETY

5 San Joaquin
Irvine, CA, 92612

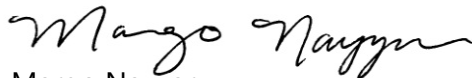
**RE: UC IRVINE HEALTH CAMPUS HOSPITAL AND AMBULATORY CARE PROJECT,
IRVINE, ORANGE COUNTY, CALIFORNIA**

To Whom It May Concern:

The University of California, Irvine (UCI) is proposing the Health Campus Hospital and Ambulatory Care Project in Irvine, Orange County, California. Michael Baker International is conducting a study to determine whether the project might affect historic properties. The proposed project is located on the UCI campus at the southwest corner of Jamboree Road and Campus Drive, as depicted in the accompanying figures.

Please notify us if your organization has any information or concerns about historic properties in the project area. This is not a request for research; it is solely a request for public input for any concerns that the Historical Society may have. If you have any questions, please contact me at margo.nayyar@mbakerintl.com or (916) 231-2236.

Sincerely,



Margo Nayyar
Cultural Resources Manager

Enclosures

Figure 1 – Regional Vicinity

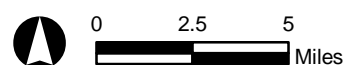
Figure 2 – Area of Potential Effects



4/30/2019, JN, M:\Data\172571\GIS\MXD\Health_Campus_Cultural\Fig_01_Regional_Vicinity.mxd, RP

HEALTH CAMPUS HOSPITAL AND AMBULATORY CARE PROJECT
 CULTURAL RESOURCES IDENTIFICATION AND EVALUATION REPORT
Regional Vicinity


Figure 1



Source: ArcGIS Online, 2018



Legend

 Area of Potential Effects

4/30/2019 JN M:\data\172571\GIS\MXD\Health_Campus\Cultural\Fig 02 Area of Potential Effects.mxd RP

APPENDIX D

DPR 523 FORMS

(REDACTED)